



18TH NATIONAL SCOUT JAMBOREE

PINTADOS DE PASSI CAMP HANDBOOK

PINTADOS DE PASSI CAMP, PASSI CITY, ILOILO, PHILIPPINES
DECEMBER 11-17, 2023

**“YOUTH ENGAGEMENT: SUSTAINING RELEVANCE AND STRENGTHENING
RESILIENCE”**



GREETINGS

Mainit nga pag abi-abi sa inyo pag-abot kag malipayon nga pagpanamyaw kaninyo tanan!

Welcome to the 18th National Scout Jamboree here in the *Sweet City in the Heart of Panay* - Passi City!

To all the participants of this grand gathering, we extend a heartfelt and warm welcome to our beautiful city, where the spirit of scouting and the charm of Passinhon hospitality blend seamlessly. We hope that as you embark on this exciting adventure, you feel the genuine warmth and friendliness that our city is renowned for.



Passi City, nestled in the heart of Panay, opens its doors wide to embrace scouts from all corners of the nation. As you explore the rich tapestry of activities and experiences, may you find inspiration, camaraderie, and the true essence of scouting that unite us all.

Our city is not just a host; it's a canvas of diverse cultures, breathtaking landscapes and, most importantly, the warmth of its people. Let the 18th National Scout Jamboree be a celebration of friendship, learning, and the shared values that make scouting a beacon of positivity in our communities.

So, scouts, scout leaders, and participants alike - immerse yourselves in the adventure that awaits you. Feel the pulse of Passi City, where every smile is a testament to the joy of welcoming you to our home. May your time here be filled with memorable experiences, lifelong friendships, and the genuine warmth of the Passinhon people.

Scout on and enjoy every moment of this extraordinary journey!

JESRY T. PALMARES
UNDERSECRETARY
FOREIGN-ASSISTED AND SPECIAL PROJECTS OFFICE (FASPO)
DEPARTMENT OF AGRARIAN REFORM (DAR)

FOREWORD

Welcome to the 18th National Scout Jamboree in the City of Passi, Iloilo, Region VI-Western Visayas!

Scouting is a global and educational Youth Movement that builds friendships, experiences, and skills for life and shapes young people's futures as active citizens.

The 18th National Scout Jamboree is a celebration of unity and diversity, bringing together scouts, leaders, and volunteers from every corner of our nation. It is a testament to the power of collaboration where friendships are forged, skills honed, and memories etched for a lifetime.

In the spirit of camaraderie, adventure, and leadership, this Pintados de Passi Camp Handbook serves as your compass through an extraordinary journey for a week-long-fun-filled Scout Jamboree. This Handbook is a supplementary material to the 18th National Scout Jamboree Portal.

Within these pages, you will discover not just guidance but a roadmap to experiences that will challenge, excite, and empower you. From overcoming obstacles to fostering teamwork, from embracing diversity to showcasing commitment to service, this Jamboree offers a tapestry of opportunities.

Remember, this Handbook is more than a guide – it is a reflection of the Scout Spirit that binds us together. Embrace every moment, cherish every connection, and let the spirit of Scouting lead you on this remarkable adventure.

We extend our heartfelt gratitude to the organizers, leaders, volunteers, and participants whose dedication and passion make this Jamboree possible. Your commitment embodies the true essence of Scouting, enriching the lives of countless individuals.

So, as you embark on this exhilarating journey, remember the Scout Law and Oath, and live up to the ideals they stand for.

May this 18th National Scout Jamboree be a happy experience that will leave an indelible mark on your life.

TABLE OF CONTENTS

Greetings	i
Foreword	ii
Table of Contents	iii
Messages	vi
The 18th National Scout Jamboree Logo	xvi
History of Passi City	xvii
How we can help you best...	xxi
Logistics	
• Site Development and Physical Development	1
• Electricity	2
• Water Supply	3
• Solid Waste Management	4
Crisis and Risk Management	
• Safety and Risk Assessment Management System	8
• Peace and Order and Public Safety	9
• Traffic and Security	15
• Health and Sanitation	16
• Jamboree Infirmary and First and Stations	17
• Safe from Harm and Listening Ear	18
Publicity and Promotions	
• Press and Media Relations	19
• Content Creation (Social Media & Online Presence)	20

TABLE OF CONTENTS

• Documentation	21
• Jambo News and Print (Jambo Balita)	22
Jamboree Information Center	
• Jambo Information Desk/Satellite Info Center	23
Scout Support Hotline	24
Lost and Found Center	25
Marketing Creatives	26
• Layouting and Design	
• Mounting and Installations	
Tourism	
• Tour Guiding and Pasalubong – Souvenir Center	27
• Welcoming Performances	29
• Tourist Attractions	30
• Pasalubong – Souvenir Center	36
Jambo Market and Concessionaires	38
Guest Services	39
BSP Sports and Physical Program	42
Transportation	43
Communications	44
Finance Management	45
Schedule of Activities	46

TABLE OF CONTENTS

Sub-Camps	47
• Camp – Western Visayas Region – (WVR)	48
• Camp – Central Luzon Region (CLR)	49
• Camp – Southern Tagalog Region & Bicol Region (STR & BR)	50
• Camp – Eastern Visayas Region (EVR)	51
• Camp – Northern Eastern Luzon Region & Ilocos Region (NELR & IR)	52
• Camp – Eastern Mindanao Region (EMR)	53
• Camp – Western Mindanao Region (WVR)	54
• Camp – National Capital Region (NCR)	55
• Camp – Foreign Delegates	56
Pintados de Passi Camp Map	57
Greetings	58
Acknowledgements	59
Emergency Hotlines	60

MESSAGE

“

Dear Scouts,

Congratulations Boy Scouts of the Philippines for this 18th National Jamboree!

Our great Asia-Pacific Region has always been proved to be one of the Regions that champion youth engagement. It's great to see a gathering of next change makers of our society.

We value our young people as we involve them in decision-making processes, encouraging their participation, and valuing what they have to say in things that affect them. We empower our young people to take ownership of the experience they have in our Movement and shape it according to their dreams and aspirations.

As we empower them, this Jamboree is a unique platform for our Scouts to grow, develop, and have a chance to become leaders that are ready to face challenges. Scouting equips our young people with the tools to face adversity, build resilience, and adapt to our rapidly changing world.

When our Scouts adapt and engage continuously with today's innovations, we grow as a movement – a Movement that sustains its relevance in times of uncertainties, standing through the test of times. We can do this through cultivating a positive mindset that sees opportunities in times of vicissitudes.

Together, let us strive to make Scouting a safe, inclusive, empowering, and impactful experience for all young people. Y

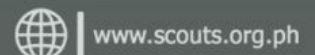
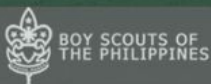
our active participation in this 18th National Scout Jamboree is key to shaping the future of Scouting and the world.

Wishing you all a memorable and inspiring Jamboree!

”



J. RIZAL C. PANGILINAN
Regional Director
WSB-Asia Pacific Region



MESSAGE

Greetings!

I felicitate the organizers and participants of the 18th National Scout Jamboree of the Boy Scouts of the Philippines graciously hosted by the magnanimous people of Passi City, Iloilo Province.

I take pride in being a part of this historic Jamboree with faith and trust that you will acquire some invaluable lessons and useful experience from this event while having fun at the same time.

This guidebook contains among others an array of activities that will surely make your participation in the Jamboree more meaningful. With the theme "Sustaining Growth," I believe that you, our dear Scouts from all over the country, are growing up to the expectations of your Scout leaders who believe that you are taking into heart the learning, the discipline and the values you have all been getting from Scouting and highlighted by your being part of the 18th National Scout Jamboree.

Let this guidebook leads you to a more exciting outdoor experience while fostering deep appreciation for nature and the environment. Let it also take you to the adventures that you have been waiting for so long.

Keep this as your personal memento, a reminder to keep the spirit of Scouting always alive in your heart.

Enjoy the Jamboree, meet friends, foster brotherhood and make Scouting an opportunity for personal growth. !



DALE B. CORVERA
National President
Boy Scouts of the Philippines



MESSAGE

“
Greetings!

The Boy Scouts of the Philippines warmly welcomes the more than 30,000- strong participants to the 18th National Scout Jamboree!

In the recent years, the BSP has halted the conduct of its Scouting programs and activities due to the onset of the COVID-19 pandemic. And like any other organization, the BSP was not spared from the crippling effects of the pandemic. However, staying true to the well-entrenched “Laging Handa” spirit, the BSP was able to surpass the challenges and conquer the multitude of uncertainties.’


Finally, the long wait is over!

The 18th National Scout Jamboree is a testament to the undying commitment and relentless passion of the BSP to influence and develop the Filipino youth towards becoming stewards of change and goodwill in our beloved Philippines.

On behalf of the BSP and together with our partners in the Department of Education, my huge congratulations to everyone involved in the organization of the 18th National Scout Jamboree and its imminent success.

Mabuhay tayong lahat!




DIOSDADO M. SAN ANTONIO
Officer-in-Charge
Office of the Secretary General



MESSAGE

Matam-is nga pagpanamyaw kaninyo tanan!

As we brace ourselves to participate in the 18th NSJ in Camp Pintados de Passi , we look forward to an exciting, enjoyable and challenging outdoor programs and activities that this historic national event offers to our Scouts and Volunteers.

The Jamboree provides educational opportunities and experiences to learn life skills in a safe, nurturing, and meaningful environment where adventure, fellowship, and humanity thrive. The participants are provided with productive spaces and avenues to connect, engage, and share their talents with fellow Scouts from all over the country. Verily, they will imbibe these life-changing learning feats to build character and develop competencies to become active and responsible citizens, and be able to face the challenges and complexities of the future.



As a potent feature of our Scouting life, this fun-filled gathering enables everyone to cultivate and renew friendships, generate and co-create relevant ideas, and articulate actions and responses for a better tomorrow. The Jamboree aptly demonstrates that Scouting is all the more relevant and continues to be a pursuit of choice among our young people.

As Scouting is education for active citizenship and sustainable development, let us make camp life throughout the Jamboree absolutely wholesome and rewarding to our Scouts and Volunteers!

Mabuhay!

ATTY. CEDRICK G. TRAIN PhD, CEO VI
CHIEF NATIONAL COMMISSIONER
BOY SCOUTS OF THE PHILIPPINES

MESSAGE

My warmest welcome to all the Scouts and Scouters to the 18th National Scout Jamboree in Passi City, “the Sweet City in the Heart of Panay Island”!

The Scout Movement is a valuable force which is so much more than hiking and camping, because it is a venue where young leaders are developed. As a scout myself, I learned the important skills of leadership, discipline, and a sense of responsibility throughout my scouting journey. These experiences have served me well ever since and have shaped me into the person that I am today. And these keep me motivated to continue to give back to the community and inspired to share to all Passinhons and young generations the passion for the scouting movement.

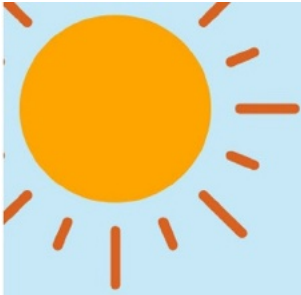


It is with so much pride and honor to be the host city of this national jamboree. This unlocks many opportunities for us to expand our presence and showcase our culture, our people, and our potentials to a wider audience. With the collaborative efforts of all the local leaders, multi-sectoral stakeholders, the academe, and scout partners, we have traversed dimensions to ensure a transformative, life-affirming journey for all Scouts.

This 18th National Jamboree is a game-changer milestone for the City of Passi, realizing our aspiration to be on the map for hosting around 35,000 Scouts and Scouters in this historic 18th National Scout Jamboree. Together, let us celebrate diversity, develop lifelong friendships, and return home full of cherished memories and invaluable lessons in the spirit of scouting!

ATTY. STEPHEN A. PALMARES CPA
CITY MAYOR, PASSI CITY, ILOILO
CAMP CHIEF, 18TH NATIONAL SCOUT JAMBOREE

MESSAGE



Warm greetings from the Home of the Champions!

It is a known fact that Boy Scouting holds notable significance in the holistic development of Filipino learners, hence this year's 18th National Scout Jamboree hosted by the Local Government of Passi City is one momentous event that tremendously creates extraordinary experiences for the scouts from all over the country.

The emphasis on character building in Boy Scouting complements the educational mission. Scouts learn the values of honesty, integrity, and respect, creating a foundation for ethical decision-making. These values are fundamental not only in personal development but also in shaping responsible and conscientious citizens.

The Department of Education Western Visayas fully supports the 18th National Scout Jamboree as it aligns with the Department's commitment to a well-rounded education that provides learners with experiences that go beyond the classroom.

With its mantra that focuses on producing champions, DepEd Region VI believes that scouting enables all learners to dauntlessly tackle tasks and responsibly work in teams that make them champions and leaders by example.

On behalf of the men and women of DepEd Region VI, I extend my warmest congratulations to all the champion scouts and leaders, the Local Government of Passi City, and the Boy Scouts of the Philippines for this successful event!



RAMIR B. UYTICO EdD, CESO III
Regional Director

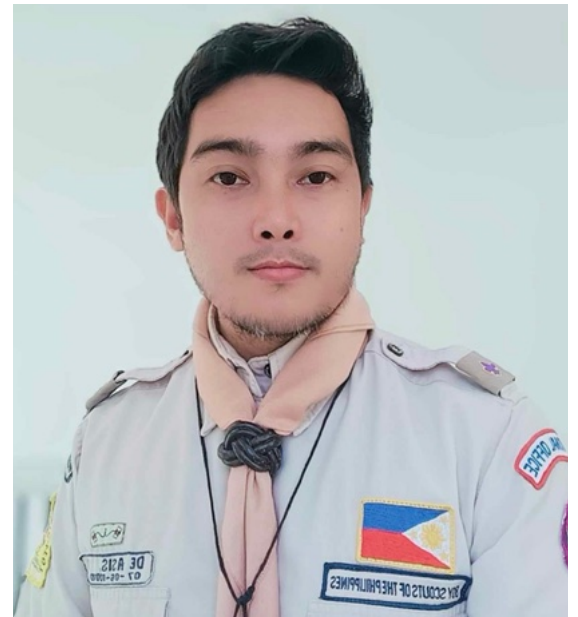


MESSAGE

A National Scout Jamboree on its greater heights!

One-of-a-kind Jamboree that opens doors to all Scouts from all over the country promoting holistic youth engagement geared towards personal growth and building Scout camaraderie, and more importantly, creating a positive impact on society.

As we embark on this new historic chapter of the National Scout Jamboree of the Boy Scouts of the Philippines, partaking in a wide array of challenging and adventurous scouting activities, let us continue to uphold that great scouting spirit etched on each of us by the Founder- Lord Baden-Powell. Take advantage of this platform to broaden your horizon as a Scout- engage with your fellow Scouts from different cities and provinces all over the country, learn and demonstrate scoutcraft and campcraft, participate actively in the youth programme, maximize the fun and experience of the jamboree, and finally, create unforgettable and lasting memories that once in your life as a Scout you've been to Passi City for the 18th BSP National Scout Jamboree.



With the ever-changing society, the Boy Scouts of the Philippines as a member of the largest youth organization in the entire world has proven itself to be relevant and resilient to the call of times especially in providing quality and up-to-date scouting training and programs to the Scouts being the main highlight and theme of this jamboree.

Finally, the Boy Scouts of the Philippines, Western Visayas Regional Coordination Office along with its Local Councils is one with the Passi City Government and BSP, Iloilo (Confesor) Council in wholeheartedly welcoming you to the Pintados de Passi Camp, Passi City, Iloilo for the 18th BSP National Scout Jamboree.

Mainit nga pag-abi-abi sa inyo pag-abut sa Siyudad sang Passi!

Mabuhay, Boy Scouts of the Philippines!

Happy Scouting sa tanan!

RYAN S. DE ASIS, RN
OIC-REGIONAL SCOUT DIRECTOR
BSP, WESTERN VISAYAS REGION

MESSAGE

A Sincere Scout handshake and warmest welcome to the 18th National Scout Jamboree!

You are indeed very fortunate to be privileged to represent your local Council and we are double happy to have you with the rest of the 30,000 scouts in this 18th fantastic moment of fun, fellowship, festivals, food, and forest.

May your stay and participation in various activities be most enjoyable and fruitful as you trek to adventure and advancement.

It is my earnest hope that each and every one of you will derive from your experiences in this Jamboree greater inspiration and a brighter outlook as responsible citizens and future leaders of our country.



HON. MATT P. PALABRICA
COUNCIL CHAIRMAN
BSP, ILOILO (CONFESOR) COUNCIL

MESSAGE

Welcome to the 18th National Scout Jamboree!

In preparation to the leadership roles which you will assume in the years to come, I wish to extend my personal greetings and the pleasure of having you with us in this challenge for adventure. The activities in this camp will help you and your patrol practice and refine the fundamental skills of outdoor life.

Take full advantages of this Jamboree which branches out to various types of opportunities including leadership for life. Take active part in various activities. and bring back home a long list of new friends, a manuscript full of new skills, a shipload full of new Scouting voyage, and a better Scout richer in experience.

Learn, laugh, and enjoy!



ERIC U. DUMDUMAYA
COUNCIL SCOUT EXECUTIVE
BSP, ILOILO (CONFESOR) COUNCIL

MESSAGE

My warmest congratulations to the participants in this 18th National Scout Jamboree hosted by the Iloilo (Confesor) Council and the City of Passi!

As we continue serving the nation by providing a basic education that is MATATAG, we in the Department of Education Schools Division of Iloilo, extend our sincerest gratitude to the Boy Scouts of the Philippines for your continued support to the DepEd's vision of honing learners who will passionately love the country and contribute meaningfully in nation building. Your support and our collaboration in making this dream for our young children a reality is a manifestation of our commitment to the Scout Oath of doing our duty to God and country and in making every Ilonggo learner a Champion!



Now, more than ever, Scouting has become more relevant and important. In these trying times, we see how our scouts and scouters have helped our struggling and suffering brethren – reflective of our mission of helping the youth develop values and acquire competencies to become responsible citizens and capable leaders. We thank them for their concern and for making us feel and see brothers helping brothers and sisters in season and out of season.

And so, as we continue bringing more people into the scouting fold, let us be inspired by all the stories of *pagdagyaw* not just by our scouts and scouters but also by those who continue to extend their helping hands in these times. We always remember our slogan, "Do a good turn daily" because wherever we are, in whatever situation we are in, "once a scout, always a scout."

Again, congratulations to everyone and we thank every scout and scouter joining this historic jamboree.

Mabuhay ang mga scouts at scouters! Padayon ang Scouting sa Iloilo agud magapadayon ang pagPANGIBABAW sang Iloilo!

Para sa isang Bansang Makabata at Batang Makabansa,

DR. ERNESTO F. SERVILLON JR., MNSA, CESO VI
OIC Schools Division Superintendent
BSP Iloilo (Confesor) Council Scout Commissioner



THE 18TH NATIONAL SCOUT JAMBOREE LOGO

Welcome to the “Sweet City in the Heart of Panay Island” Passi City, the Home of the 18th National Scout Jamboree of the Boy Scouts of the Philippines.

The Official Logo of the 18th National Scout Jamboree features the most iconic symbol of Passi City – “the Pintados” – or the “painted ones” in Spanish, as it represents the most creative and indigenous people of the Visayan islands who were known for their intricate and elaborate paint and body art. Pintados in itself has become the famous Pintados Festival – a cultural celebration here in Passi City, Iloilo, where participants and performers often decorate themselves with colorful body paint designs with geometric symbols and tribal design patterns, as it pays homage to the ancient art and practice of body painting and tattooing, which signifies the indigenous culture of the Visayan region.

The Official Logo also highlights the beauty and abundance of nature and environment as the City of Passi is blessed with the richness and wealth of *sugarcane plantations, pineapple farms and rice fields* where the city is named with its slogan “The Sweet City in the Heart of Panay Island”. The mountain peak at the background of the Logo represents the City’s slogan, “*Together, we will bring Passi City to its greater heights*” as well as its geographical location featuring the rolling hills and narrow valley plains in Barangay Sablogon and its surrounding vicinity of the Jamboree campsite.

The vivid shades of royale blue color scheme denotes authority, trust, and confidence to leadership to the host Local Government Unit of Passi City as it accentuates and focuses the beauty and nature, culture and community.

The “**Theme: Youth Engagement: Sustaining Relevance and Strengthening Resilience**” which offers a constructive avenue for a **meaningful socio-civic engagement** to all Scouts and young people to increase the level of their knowledge, skills, and attitude to take positive actions in their communities to address issues and challenges about sustainable development.

Youth Engagement brings youth participation and youth involvement to greater heights and level of maturity as we prepare our Scouts to take leadership roles in Scouting and in the communities. Youth Engagement provides leadership opportunities to all Scouts in the Jamboree by means of hearing their voices and opinions to critical matters affecting their lives in the home, school, neighborhood, and communities. Youth Engagement takes bolder and bigger steps towards Youth Empowerment by training the youth how to collaborate, communicate, make informed decisions, solve problems, and work as a team.

Come and join us at the 18th National Scout Jamboree in the City of Passi, Iloilo! See you, Scouts!



HISTORY OF PASSI CITY

How It All Began

A group of Spaniards under Legazpi was tasked to scout the Iloilo hinterlands and, by chance, ended up at the mouth of the Jalaur River (which is located near present-day Barotac Nuevo, Iloilo). Riding on unique flatboats called a 'sciata', they were able to traverse along the river and managed to arrive at the far reaches of what is now known as Calinog.

This same group would then travel downstream until they arrived and anchored at the Lamunan River. Curious about their current whereabouts, they wandered about and stumbled upon an old woman winnowing rice.

'¿Cómo se llama este lugar?' One of the men began to ask.

The elder, confused at these strange visitors, however, answered gleefully. '*Pasi.*'

She would then proceed to show them the unhusked rice on her *kararaw*, thinking the group was asking what she was doing.

Thus, did the Spaniards begin calling that place as '*Pasi*'. Over time, the name would evolve to its present name of Passi.

During the Spanish Colonial Era

According to historical records, Passi was originally settled by three siblings named Dig-on, Tokiab, and Umwang. Prior to becoming a component city, Passi used to be one of Iloilo's oldest settlements.

Don Martin Saligumba, the first gobernadorcillo of Passi, is believed to have been descended from one of these brothers.

Saligumba would later be responsible in the founding of the first church of the town. It should be noted, however, that this church was built elsewhere in comparison to the Augustinian church that was built and located at the poblacion. Later, this church was replaced by the one founded by Saligumba. Renovations were done through succeeding priests until the time of Rev. Fr. Apolinar Villanueva.

During 1867, when Capitan Salvador Panes Perfecto took office, he made a decree that the scattered inhabitants of Passi relocate to the town center. It was also through Salvador that the first stoned church was built through the daguiao system – forced labor for every male inhabitant per week. After its construction, a priest by the name of Pedro was the first to lead this church.

Health conditions during the late 1880's were dire as masosuelo and cholera were the prominent diseases in this time period. Several Passinhons died of the disease and were buried at a cemetery just beyond the road to present day Brgy. Agdayao.

Among the places in the pueblo, one stood out among the rest. It was believed this place was blessed from the disease epidemic as only few deaths occurred here. This place was later called Calle Salvacion.

In 1893, the town had its first Filipino parish priest in Padre Amado Panes Perfecto. He was able to study at the prestigious University of Salamanca in Spain and finished with a doctorate in Canon Law. He was responsible in the construction of a convent known for its curved furniture and imported chinaware and utensils.

During the Philippine Revolution, the insurgents snuck into the town and burned houses belonging to prominent families and the only buildings that survived were those made of stone and concrete. After the war, the town's appearance was a far cry from its earlier appearance in 1896.

Life in the Early 1900's and the American Regime

Passi was said to be vast and covered with wild forests and thick vegetation. The people would also resort to the use of the kaingin system for farming. Rice and other important root crops such as kamote, ube and tam-is were then planted on these cleared fields. During times of extreme famine, the inhabitants would turn to kayos – a poisonous member of the yam family. The root crop is only edible if properly processed: cut into thin slices and cured in running water for several days.

Due to both the Revolution and the Filipino-American War, the insanitary living conditions and insufficient water supply in the town caused major epidemics such as cholera and malaria to break out. Rinderpest, a bovine disease, also occurred in 1900 and killed off many cattle and buffalos. Careful quarantine protocols managed to save some of these animals. Life for the common Passinhon would slowly improve with the passage of time.

During this period, the primary modes of transportation were through cars (carros) and carrosas pulled by either cows or carabaos. Travels through this method could last for days.

It was not until the year 1906 that the Philippine Railway Company – Panay Division was established in Iloilo that made travels faster. The railroad ran from Iloilo to Capiz with Passi as one of its center points.

Life for the Passinhons generally improved due to its flourishing economy and the increased interest in education among the younger generation of that time.

When the Philippine Islands was ceded to the United States by Spain, Passi was among the many municipalities in the country that followed the opening of schools.

Through the Gabaldon Building Act of 1907 that promised the creation of modern public schools throughout the island, the law provided a funding of Php 1, 000, 000 in its construction costs. Interest in education increased among the general public. Students were also encouraged by the then government to study in the United States as pensionados.

In 1912, the first Agricultural, Commercial and Industrial Fair was held at Passi. Through this, several Passinhons were introduced to modern scientific farming.

Japanese Occupation and Participation in the Second World War

After the bombing in Pearl Harbor in December 1941, the US and its colonies would subsequently join the Second World War. Passi has also seen its share of the battlefield as it bore witness and participated in the events of the Pacific War Theater.

On the January of 1942, the Iloilo Provincial Government was moved to Passi due to its strategic location wherein it served as a focal point for many military services and supply. The Japanese forces were recorded to have landed on Panay on April 16, 1942 and many of its inhabitants fled to the more mountainous areas of the area to escape the Japanese army. Those who were not able to flee were killed by the Japanese Forces – a handful of Chinese refugees were one such examples. They were indiscriminately killed in Hacienda sa Lungao in what would later be known as the 'Burning Field of the Rising Sun'.

Several of the town's buildings were burned by both the USAFFE and Guerilla Forces to prevent it from Japanese acquisition. Guerilla warfare was a common sight during the war wherein the Bita-ogan Railroad Station was the first location of its first strike against the Japanese Imperial Forces. This strike team was led by the late Lt. Alberto Perlas.

On March 18, 1945, the American forces landed and successfully liberated the island of Panay. Relief goods and supplies were brought in by the Americans. By the time the war officially ended in 1945, Passinhon inhabitants returned to the Poblacion and several reconstruction efforts were implemented.

Post-War and Reconstruction Period

With the formal declaration of the end of the Second World War, many of the Passinhon refugees returned to the town and began reconstruction efforts. Public buildings made of light materials were improved and were far more durable than their predecessors.

In 1948, the public market was expanded and a wing parallel to the place itself was added. A central building was also constructed and became the clothing and textile industry of the town.

That same year, Passi Elementary School received a total of Php70, 000 war compensation funding. It was also used to restore the destroyed Gabaldon building and other school buildings. The funding was inadequate, however, the local Parents-Teachers' Associations (PTA) pitched in to complete its restoration.

The church, through donations from the townspeople, was also restored. Under the leadership of Fr. Jose Buenaflor, the church saw great improvements with new altars; repaired walls and new roofing among those implemented.

Life slowly returned to normal as people adjusted to the new and improved town of Passi.

The town of Passi would later enter an era of progress where it became a central trading and industrial hub for many investors causing its urbanization to accelerate at a fast rate for several years.

With its growing populace, strategic location, and booming economy; then Mayor Jesry T. Palmares, alongside his Sangguniang Bayan Members, appealed to convert the town into a component city.

The municipality was able to pass the requirements needed for it to become a component city. On January 30, 1998, President Fidel V. Ramos signed RA No. 8469: An Act Converting the Municipality of Passi in the Province of Iloilo into A Component City To Be Known As the City of Passi.

Passi formally became a component city when RA No. 8469 was ratified through a plebiscite on March 14, 1998.



**MAY YOU HAVE A
MEANINGFUL STAY
IN PASSI CITY
WITH THE
HUMBLE SERVICES
THAT WE CAN OFFER.**

LOGISTICS

SITE AND PHYSICAL DEVELOPMENT

The Site and Physical Development Sub-Committee plays an important role within the Logistics Committee for the 18th National Scout Jamboree, contributing to the seamless execution of this prestigious event. As the masterminds behind the physical infrastructure, layout, and overall site planning, this sub-committee ensures that the jamboree venue provides a safe, efficient, and enjoyable environment for scouts and leaders from across the nation. Under the sub-committee, the following were set up:

- Welcome arcs and camp gates all camp structures
- Toilets and bath facilities in all areas with continuous water supply for all campers
- Streetlight pedestals and electrical posts in all road networks
- Electrification and lighting of all camp sites, headquarters, toilet and bath areas, grand arena, jambo market, infirmary, and all other related structures
- Fences in all camp areas and jamboree sites for security
- Bamboo bridges during aquatics and water fun activities

RULES & REGULATIONS

- Respect designated boundaries and follow specified paths within the jamboree site.
- Adhere to signage indicating restricted or off-limits areas for safety reasons.
- Utilize tents, facilities, and structures according to their designated purposes.
- Refrain from any unauthorized modifications to existing infrastructure.
- Set up tents in designated camping areas only.
- Follow guidelines for tent placement and spacing to ensure a safe and organized campsite.
- Report any concerns regarding camp physical structures to the Site and Physical Development Sub-Committee.
- Stay informed about any changes or developments communicated by the Site and Physical Development Sub-Committee.

CENTER LOCATION

Engineering Head Quarters, Pintados de Passi
Camp grounds near STR/BR Sub-Camp

CHAIRPERSON: Engr. Agnes Hope B. Palmares 09199943192

CO-CHAIRPERSON: Daryl Villanueva Jr. 09615276667

MEMBERS:

LGU

- | | |
|--|--|
| 1. Engr. Johnny P. Colmo, Jr. | 1. Engr. Richard Q. Deriada |
| 2. Engr. Richard D. Dionio | 2. Engr. Jose Rodney Develos |
| 3. Engr. Mitch M. Payas | 3. Engr. Elbern Padios |
| 4. Daniel Dador | 4. Engr. Sherry Mae C. Caso and Team Members |
| 5. Kyle Oeneri Monteverde and Team Members | 5. Mr. Leo P. Pacardo |
| 6. Arch. Emilio Joaquin, Jr. | 6. Mr. Arnold P. Aguilar and Team Members |
| 7. Engr. Angelie Grace P. Alba | 7. Mr. Jose Rolan Palma |
| 8. Arch. Rachel Legore and Team Members | 8. Engr. Diadema Pilarta and Team Members |
| 9. Mr. Federico A. Panes | 9. Engr. Robert Subigca |
| 10. Arch. Elmo Palma Jr. and Team Members | 10. Engr. James Roy Elboltura |
| 11. Engr. Edmund A. Pama | 11. Jun Claude Gatungay |
| 12. Engr. El Fred Del Castillo | 12. Filner Gasis |
| 13. Mr. Eric P. Palmares and Team Members | 13. Paul Ticson |
| | 14. Samson Padre-E and Team Members |

DepEd

1. Engr. Genelli U. Tupino
2. Dandy Palma



The Electricity Sub-Committee is responsible for ensuring a reliable and safe electrical infrastructure throughout the event. This sub-committee plays a vital role in powering various elements of the jamboree, from essential facilities to supporting the technological needs of the participants. The sub-committee has done the following:

- Installed connections of electricity to Pintados de Passi Camp and to its different sub-camps
- Installation of one outlet for the lamp and one outlet for gadget/equipment for every tentage
- Coordinated with the Iloilo Electric Cooperative II for full, sufficient and uninterrupted power supply on the duration of camping activities

RULES & REGULATIONS

- Conserve energy by using electrical devices judiciously.
- High-powered equipment are not allowed in the campsites
- Ensure that electrical devices brought to the jamboree comply with safety standards.
- Report any electrical issues, such as exposed wiring or damaged outlets, to the Electricity Sub-Committee immediately.
- Do not attempt to address electrical problems without proper authorization and guidance.

CENTER LOCATION

General Services Office, Passi City
Hall, Passi City

CHAIRPERSON: Annie Marie S. Palmares 09399181863
CO-CHAIRPERSON: Jose Regie P. Balajadia PhD 0998346189

MEMBERS:

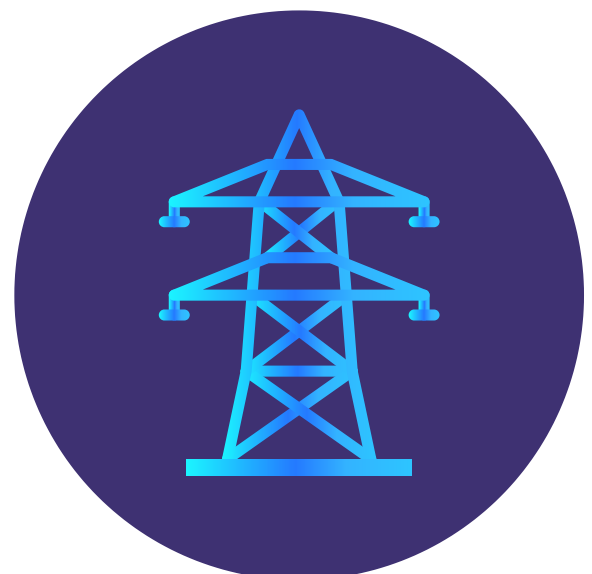
LGU

1. Richard Q. Deriada
2. Elbern B. Padios
3. Sherry Mae C. Caso
4. Jose Rodney C. Develos
5. Martin Franco
6. Rolando Palomo, Jr.
7. Dominador Pamplona, Jr.
8. Arren Nueva
9. Andrew Agregado
10. Terence Amador
11. Rio Antang
12. Johnny Baroa
13. Grelyn Cabucos
14. Milo Chavez
15. Cesar Cordero
16. Johnwayne C. Chiva

1. Gilbert S. Analista
2. Vences P. Balete
3. Kristoffer Ian P. Paborada
4. Khevin V. Alido
5. Edmark S. Padernal
6. Regel Cordero
7. Ruel de Isidro
8. Noel Ebacuado
9. Rennel Flores
10. Dan Galarpe
11. Reynan Pacardo
12. Rico Pagay
13. Jansen Palma
14. Joem Palmares
15. Porferio Palmares, Jr.
16. Niky Pamplona

DepEd

1. Johnwayne C. Chiva
2. Gilbert S. Analista
3. Vences P. Balete
4. Kristoffer Ian P. Paborada
5. Khevin V. Alido
6. Edmark S. Padernal



LOGISTICS

WATER SUPPLY

The Water Supply is a Sub-Committee under the Logistics Committee designated to provide sufficient water supply to all participants of the jamboree.

- The main pipeline and water supply is being provided by South Balibago Water Resources, Inc. with the office address located at Commonwealth Drive Passi City, Iloilo.
- The City General Services Office (CGSO) personnel had installed pipelines and distribution lines as well as water tanks inside the Camp Pintados de Passi from the main line provided by Balibago to the toilets and bathrooms for all campers, officials, and facilitators.

NOTE: WATER FROM THE FAUCETS IS NOT SAFE FOR DRINKING.

RULES & REGULATIONS

- Conserve water at all times. Close the faucets when not in use.
- Use the facilities with utmost care. Do not break the faucets nor the pipelines.
- In case of failure of water supply, please coordinate with Water Supply Committee members who will be available for 24/7 in the entire duration of the 18th National Scout Jamboree.

CHAIRPERSON: Annie Marie S. Palmares 09399181863
CO-CHAIRPERSONS: Engr. Renante A. Alaro 09691001767
Joel P. Pachejo 09514265337

MEMBERS:

LGU

1. Marlon Palma
2. Rolan Panes
3. Henry Beboso
4. Aristedis Pama
5. Melvin Palabrica
6. Edgar Casabuena
7. Marinius Carlo Trabado
8. Eliseo Zambra
9. Jurich Colacion
10. Johny Antivo
11. Joy Celiz
12. David Racklin Lacpacan
13. June Eusala
14. Nilo Senina
15. Jeffrey Parreño
16. Rolly Palencia

DepEd

1. Annie Joy Jover
2. Gemma Gloria Castellano
3. Raquel Alemania
4. Gladys Alemania
5. Amy Cinadre
6. Donald Casilao
7. Ronnie Agregado
8. Cristy Sua-an
9. Nheziel Joy Alemania
10. Roxanne Aurora
11. Jinelyn Payas
12. Genevieve Lema
13. Ma. Lourdes Cordero
14. Kristine May Segura
15. Fernalyn Gare
16. Rona Jean Trabases
17. Fycy Wu
18. Rose Mae Agramonte
19. Nerissa Cantomayor
20. Elen Rose Lamit
21. Mia Palomado
22. Ma. Marjorie Carumba
23. Aiza Mae Dalde



LOGISTICS

SOLID WASTE MANAGEMENT

The Solid Waste Management (SWM) Committee is in charge of the management of solid wastes (SW) generated during the jamboree. It shall ensure the cleanliness of each sub-camp and other camp structures.

The committee has:

- assigned waste collection points strategically located across the jamboree site;
- crafted for a comprehensive waste segregation system plan to separate recyclables and non-recyclables;
- collaborated with the local recycling facilities to ensure proper disposal and recycling of materials;
- planned for regular monitoring and inspection of the camp structures;
- developed contingency plans for handling unexpected increases in waste generation;
- coordinated with relevant committees to address any waste-related emergencies; and
- organized post-event clean-up initiatives to ensure the site is left in pristine condition.

CENTER LOCATION & FACILITIES AVAILABLE

ECO-CENTER, Segregated Waste Bins (Residual, Biodegradable, Recyclable, Special) per sub-camp, Recyclable and Biodegradable Waste Processing Equipment (Bio-shredder and Composter, Plastic Shredder, Glass Pulverizer), Tire Composting for biodegradable waste), Waste Collection Trucks

RULES & REGULATIONS

- Practice "Leave No Trace" principle
- Minimize and avoid utilization of single-used plastics
- Segregation at Source (R.A. 9003)
- Ensure cleanliness in camping areas
- Throw wastes in proper waste bins

WASTE PROCESS FLOW

Briefing of Solid Waste Management Program with Contingent Heads/Heads of Subcamps Provision of Handbook on Proper SWM	
WASTE GENERATION per Subcamp	PRACTICE OF SEGREGATION AT SOURCE IN EACH TENT SCOUTS SHALL BRING THEIR SEGREGATED WASTE TO THE WASTE COLLECTION AREA AND PLACE THEM IN THE PROPER CONTAINER (RESIDUAL, RECYCLABLE, BIODEGRADABLE)
WASTE COLLECTION per Subcamp	RESIDUAL – TRASH BINS RECYCLABLE – RECYCLING BINS BIODEGRADABLE – TIRE-COMPOSTING
WASTE RECORDING Per Subcamp	RESIDUAL – C/O PCIWMF RECYCLABLE – C/O CWMO BIODEGRADABLE – C/O CWMO
WASTE TRANSPORT per Subcamp (SEGREGATED COLLECTION) R.A. 9003	GARBAGE COLLECTION SCHEDULE: RESIDUAL – TWICE A DAY (8AM/3PM) RECYCLABLE – ONCE A DAY (SPECIAL TRIP) BIODEGRADABLE – TIRE-COMPOSTING – DRUM COMPOSTING
WASTE PROCESSING RECYCLABLE BIODEGRADABLE	RECYCLABLE - TRANSPORT TO ECO-CENTER FOR SHREDDING AND PULVERIZING BIODEGRADABLE - SUBCAMP TIRE COMPOSTING - ECO-CENTER FOR SHREDDING AND DRUM COMPOSTING
WASTE DISPOSAL RESIDUAL WASTE SPECIAL WASTE	RESIDUAL - TRANSPORT TO PCIWMF NOTE: SPECIAL WASTE PLACED IN MEDICAL AREAS SHALL BE COLLECTED BY DESIGNATED CWMO PERSONNEL FOR PROPER STORAGE AT PDSF.



LOGISTICS

SOLID WASTE MANAGEMENT

Sustainability and Recycling are the pillars of the 18th National Scout Jamboree and one of the top priority challenges of Scouting as well as the world in general. During this week, there will be more than 35,000 campers (scouts, scout leaders, guests, visitors) at the Jamboree site. Imagine the huge impact it can create if each participant does something to help reduce collective footprint.

Get ready to learn more about sustainable practices and to bring them back home!

1. Learn more about the "Leave No Trace" principle before coming to the jamboree and travel light whenever possible. This helps minimize trashes and garbage at the jamboree.
2. Make the Jamboree an Earth Hour Camp; turn off non-essential lights in camp to help conserve electricity.
3. Do not bring non-essential electronic gadgets and toys to help save electricity all the time.
4. Minimize and avoid utilization of single-used plastics. Bring your water bottles and canister to lessen wastes and trashes of polyethylene terephthalate (PET) bottles at all times. Water refilling stations are available at the jamboree market.
5. Bring your eco-bag whenever you are going to market for your troop/outfit food ration to avoid single-use of plastic-sando bags.
6. Do not bring and use plastic spoon and fork at the Jamboree. Bring your own eating and drinking utensils all the time.
7. Do not bring and use plastic cups and styrofoam during the Jamboree.
8. Plant a tree or two during the Jamboree. Another one when you get back home.
9. Always put your mobile phones in low power mode, less light, and conserve your battery. Go to nearest charging station only when necessary and/or totally drained. Much better if you can bring solar power-bank or solar charger.
10. Use a glass of water when brushing your teeth and help save water.

11. Limit your bath and shower to at least 4 minutes or less is much better.
12. Flush your toilet wastes wisely. Use at least 1 pale of water whenever applicable.
13. Keep your hands clean. Limit your handwashing for a minute or two all the time.
14. Keep inland water ways and water sources clean. Do not litter and throw trashes and garbage to water streams.
15. Keep your plate clean always. No food wastes for the whole duration of the Jamboree. Take only the amount of food that you can eat. Each camp will be provided with a Tire Composting Area (for biodegradable wastes) in case of excess food wastes.
16. Try to go Vegan or eat more veggies during the Jamboree. Buy from local market and local farmers.
17. Knowledge is power! Calculate your carbon footprint from your way to the Jamboree and back home. Try to walk or ride a bicycle whenever applicable.
18. Help your contingent in setting up your Camp Wet and Dry Pit and keep it clean all the time.
19. Bring your black trash bags and start Reusing, Reducing, and Recycling. Do solid waste management wisely. Label your trashes for biodegradable, residual, and recyclables. Each camp will be provided with receptacles for different types of wastes (Recyclable, Biodegradable, and Residual).
20. Use recyclable zip-lock plastic bags for sorting out items such as snacks, biscuits, utility kit, camping tools, and toiletries.
21. Avoid using sachet of coffee, shampoo, conditioner, soap, and other camp essentials by using permanent and refillable containers.
22. Minimize campfire impact at all times. Tell your contingent to bring butane and/or gas stove for cooking and do away with traditional backwoods cooking.
23. Think and share with us your ideas about your Sustainable Jamboree Experience and post this #ECOChallenge for the #18thNSJph2023 in all of your social media accounts to create more awareness and be able to inspire other Scouts to do the same.





LET'S **SEGREGATE** OUR WASTE!

RESIDUAL		BIODEGRADABLE
with potential for recycling	for disposal	
Flexible Plastic Leather Textile Rubber Others	Sanitary Composites Soiled Papers Soiled Plastics Others	Food/Kitchen Waste Yard/Garden Waste Agricultural/Farm Waste Livestock Waste

RECYCLABLE	SPECIAL (HAZARDOUS WASTE)	SPECIAL (INFECTIOUS WASTE)
Paper Plastic Metals Glass	Battery Busted Ligh Bulb WEEE Bulky WASTE Paints	Used Facemask Used Home Test Kits Contaminated Tissue

Please help us keeping PASSI CITY **CLEAN** and **GREEN**



LOGISTICS

SOLID WASTE MANAGEMENT

CHAIRPERSON: Horace Anthony A. Panes 09399134304

CO-CHAIRPERSONS: Marissa Espeja 09561558598

Mally Duran 09605959291

MEMBERS:

LGU

Sub-Camp 1- WVR (AT1)

Team Leader: Glenn Panabe

Members:

1. Darel Panes
2. Eligio Panizales
3. Jemuel Palma
4. Gina Panes
5. Eden Palmes
6. Virgie Perez

Sub-Camp 2- NST (HQ)

Team Leader: Martee Dormido

Members:

1. Nanita Murillo
2. Apolinario Caballero
3. Celerina Palma
4. Jose Duron

Sub-Camp 3 EMR (HQ)

Team Leader: Trixia Blasico

Members:

1. Lorna Blasico
2. Jay Cabrera
3. Romeo Cerbas
4. Jovel Cerbas
5. Leonardo Drilon, Jr.

Sub-Camp 4 WMR (HQ)

Team Leader: Aiza Palermo

Members:

1. Dona French
2. Joven Cabrera
3. Ninfa Murillo
4. Steve Lamera

Sub-Camp 5 EVR (HQ)

Team Leader: Oliver Dave Paclibar

Members:

1. Betty Bergante
2. Ryan Castor
3. Brando Penetrante
4. Laila Dean

Sub-Camp 6 NEL/IR (HQ)

Team Leader: Jancel Mallorca

Members:

1. Gil Palomaria
2. Rhiogie Palencia
3. Redialy Pampag
4. Edilberto Maizo

Sub-Camp 7 CLR (HQ)

Team Leader: Janice Gemolaga

Members:

1. Lea Muro
2. Julio Esguera
3. Kristine Dawn Paguntalan

Sub-Camp 8 NCR (HQ)

Team Leader: Levi Fallorin

Members:

1. Ma. Ramonita Pamela Bretan
2. Vincent Anthony Siruelo
3. Fernando Asan
4. Jerime Fajurano
5. Fermin Cerbas

Sub-Camp 9 STR/BR (HQ)

Team Leader: Evelyn Ferraris

Members:

1. Apple Grace Palencia
2. Neri Palencia
3. Rogie Beboso
4. Felix Andaya
5. Mark Alvin Pama
6. Carlos Palencia

Sub-Camp 10 JAMBO MARKET

Team Leader: Geno Dongosa

Niel Payas

Members:

1. Frank Fulgencio
2. Joselito Espino
3. Ernel Palmes
4. Robert Penetrante

Grand Arena (HQ)

Team Leader: Crisanto Palmes

Members:

1. Junal Barneza
2. Fred Panes
3. Jesuslito Padernal

Food Festival /Parking Lot (HQ)

Team Leader: Gomer Dalipe

Members:

1. Jaypee Dalipe
2. Logen Encanto
3. Ryan Pilar
4. Noel Penora
5. Ma. Marilyn Suasin
6. Lanie Palec
7. Kirk Perlas
8. Milda Wabe

DENR

1. Martee Dormido
2. Myren Zerrudo
3. Rona Azucena
4. Cherry Calapa-an
5. Josephine Gallo
6. Nidalyn Aagsaluna
7. Lyn Harry Lamzon
8. Kristoffer Neil Billones
9. Romulo Java

DepEd

1. Jonathan B. Recto
2. Erwin Dayandayan
3. Jerry L. Espeja
4. Nery P. Pelarco
5. Rene D. Aguirre
6. Analiza A. Elardo
7. Salvacion A. Labiaga
8. Angie Casamayor
9. Edgardo Gazo
10. Jurey Maratas
11. Joselito D. Diacuna
12. Gerardo Palomillo
13. Kempee Arconada
14. Dario Pamonag
15. Jerwin Baquiran
16. Jean Celebrado
17. Joey Arevalo
18. Eden Grace Calderon
19. Julius Ada
20. Marylina Paclibar
21. Anamie Quidan
22. Richard Pacardo
23. Rommel Araejo
24. Jel John Ayalin
25. Milarose D. Pagayon
26. Joe-Ann J. Emboltura
27. Irel Bert Plantig
28. Eduardo P. Eusala



CRISIS AND RISK MANAGEMENT

SAFETY AND RISK ASSESSMENT MANAGEMENT SYSTEM

The Crisis and Risk Management Committee for the 18th National Scouts Jamboree is an essential body dedicated to proactively identifying, assessing, and mitigating potential risks and crises that could impact the safety and smooth operation of the event. The Crisis and Risk Management Committee operates as a proactive and responsive unit, dedicated to ensuring the safety, security, and success of the 18th National Scout Jamboree by effectively managing potential crises and risks through the following:

1. Risk Assessment and Analysis. Identifying potential risks and vulnerabilities that could impact the event's safety & participants
2. Contingency Planning. Developing comprehensive contingency plans for various potential crises or emergencies
3. Emergency Response Coordination. Establishing effective communication channels and coordination among committee members, joint organizing committees, local authorities, emergency services, medical teams, and other relevant stakeholders to ensure a coordinated and efficient response to emergencies.
4. Resource Allocation & Preparedness. Ensuring the availability and readiness of necessary resources
5. Monitoring and Surveillance. Continuously monitoring potential risk factors, weather conditions, and developments during the event.
6. Immediate Response and Mitigation. Activating response plans promptly and efficiently in the event of any crisis or risk occurrence.
7. Post Event Evaluation & Improvement. Conducting post-event evaluations and assessments to analyze the effectiveness of crisis management strategies.

CENTER LOCATION

GROUND FLOOR , OFW BUILDING

CHAIRPERSON: Engr. Lira Ladigohon 09190043297

CO-CHAIRPERSON: Mary Ann Encila 09178581526

MEMBERS:

LGU

- 1.CDRRMO Personnel
- 2.Kabalikat Civicom
- 3.iCare

DepEd

- 1.Dandy Palma
- 2.Gina Obenieta
- 3.Ginalyn Montano
- 4.Jean Villanueva
- 5.Razel Estiaga
- 6.Rona Paches
- 7.Karen Panes
- 8.Leila Biboso
- 9.Josephine Lamit



CRISIS AND RISK MANAGEMENT

PEACE AND ORDER AND PUBLIC SAFETY

YOUR SAFETY IS OUR TOP PRIORITY!

Security Tips from the Chief of Police:

- Stay vigilant and report any suspicious activity.
- Keep personal belongings secure at all times.
- Follow designated paths and avoid isolated areas.
- Know the emergency exits and assembly points.
- Establish a buddy system for group activities.
- Carry identification and emergency contact information.
- Be aware of your surroundings, especially after dark.
- Follow event guidelines and listen to security personnel.
- In case of emergency, dial [0998 598 6221].

ANTI-CRIMINALITY TIPS FOR NATIONAL SCOUT JAMBOREE PARTICIPANTS

- **Stay Vigilant:** Be aware of your surroundings and report any suspicious activity to event security.
- **Buddy System:** Always have a buddy and stay together during activities. Look out for each other.
- **Personal Belongings:** Keep your belongings secure to prevent theft. Avoid displaying valuable items.
- **Emergency Contacts:** Carry identification and emergency contact information at all times.
- **Follow Guidelines:** Adhere to event guidelines and instructions from security personnel.
- **Avoid Isolation:** Stay in designated areas and avoid isolated spots. Travel in groups when possible.
- **Trust Your Instincts:** If something doesn't feel right, trust your instincts and seek help.
- **Be Informed:** Familiarize yourself with emergency exits, assembly points, and event procedures.
- **Communication:** Stay connected with your group and have a means of communication at all times.

CHAIRPERSON: Pltcol. Benjo E. Clarite 09985986221
(033-3115723)

CO-CHAIRPERSON: Rene P. Ramos 09177995657
(033-3115744)

DOs

- Follow event guidelines and schedules.
- Stay with your assigned group and adhere to the buddy system.
- Carry identification and emergency contact information.
- Report any suspicious activity to security personnel.
- Be aware of your surroundings and follow safety instructions.
- Respect fellow participants and staff.
- Stay hydrated and take breaks during outdoor activities.
- Secure your personal belongings at all times.
- Familiarize yourself with emergency exits and assembly points.
- Have a memorable and enjoyable Jamboree experience!

DON'Ts

- Don't wander off alone, especially in unfamiliar areas.
- Don't engage in unsafe or prohibited activities.
- Don't disregard event rules and guidelines.
- Don't carry excessive amounts of cash or valuables.
- Don't hesitate to report any concerns to event organizers.
- Don't ignore weather advisories – be prepared for changes.
- Don't share personal information with strangers.
- Don't litter; maintain cleanliness in the camping area.
- Don't hesitate to seek assistance from event staff or security.

CENTER LOCATION

Passi City PNP Police Station

DUTIES & RESPONSIBILITIES

Peace and Order Maintenance, Criminality Deterrence



Process flow in case of untoward incidents

Any person/complainant report any incident, crime, illegal activities and such other information that require necessary police intervention and response, to the nearest police assistance desk (PAD).

PAD to evaluate the report and provide necessary response and intervention

Refer the matter to the investigator on-site (shall evaluate the circumstances regarding the reported incidents).

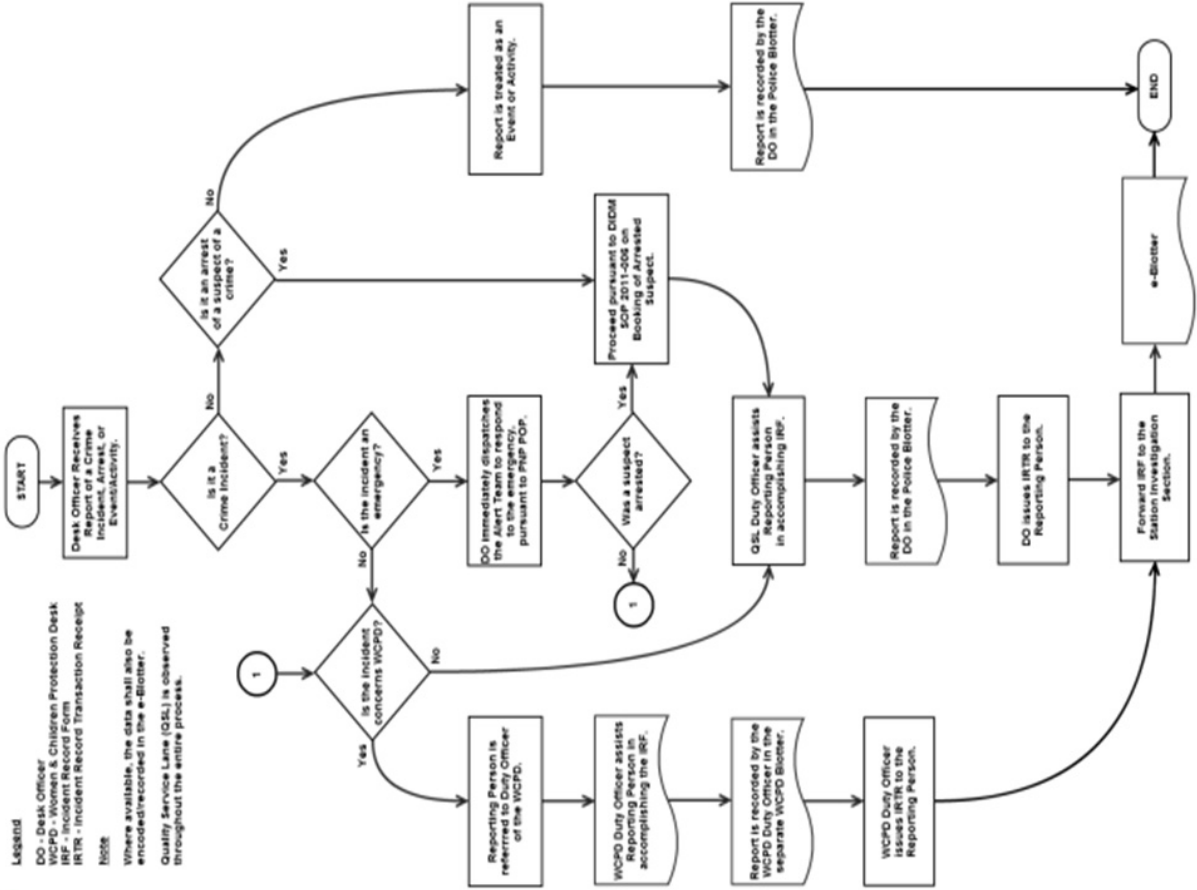
If there is a crime committed refer to WCPD if the incident involving Minor or women for evaluation and referral to DSWD and General invest if they are of legal age.

Upon evaluation and determination of available fact, prepare necessary documents and other requirements for filing of case.

Upon ev determination of available fact, prepare necessary aluation and documents and other requirements for filing of case.

Record the facts of incident to Passi CPS

INCIDENT RECORDING SYSTEM (Blotter Procedure Flowchart)

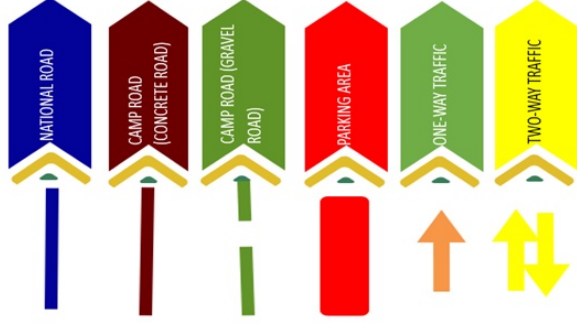


TRAFFIC REROUTE PLAN

ROAD BLOCKING, REROUTING AND GRAND PARADE ROUTE (DEC 11, 2023 - GRAND OPENING)

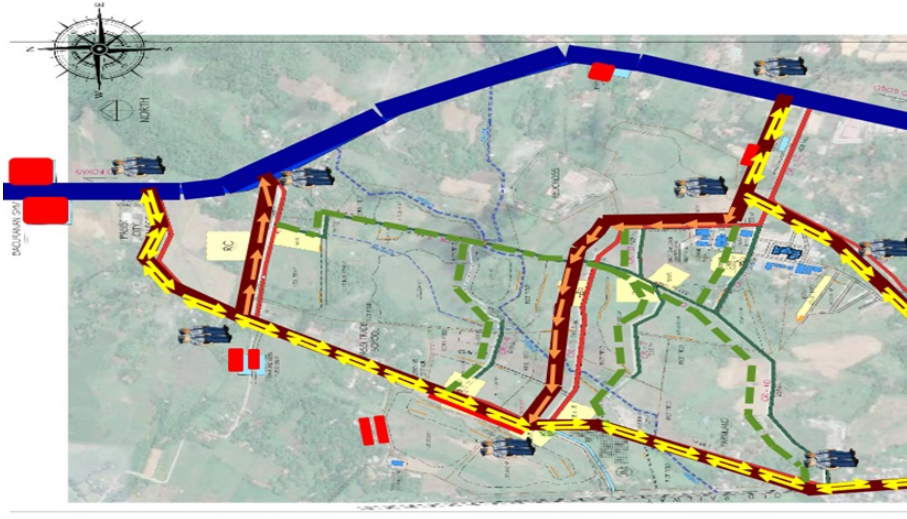


TRAFFIC PLAN LAY-OUT

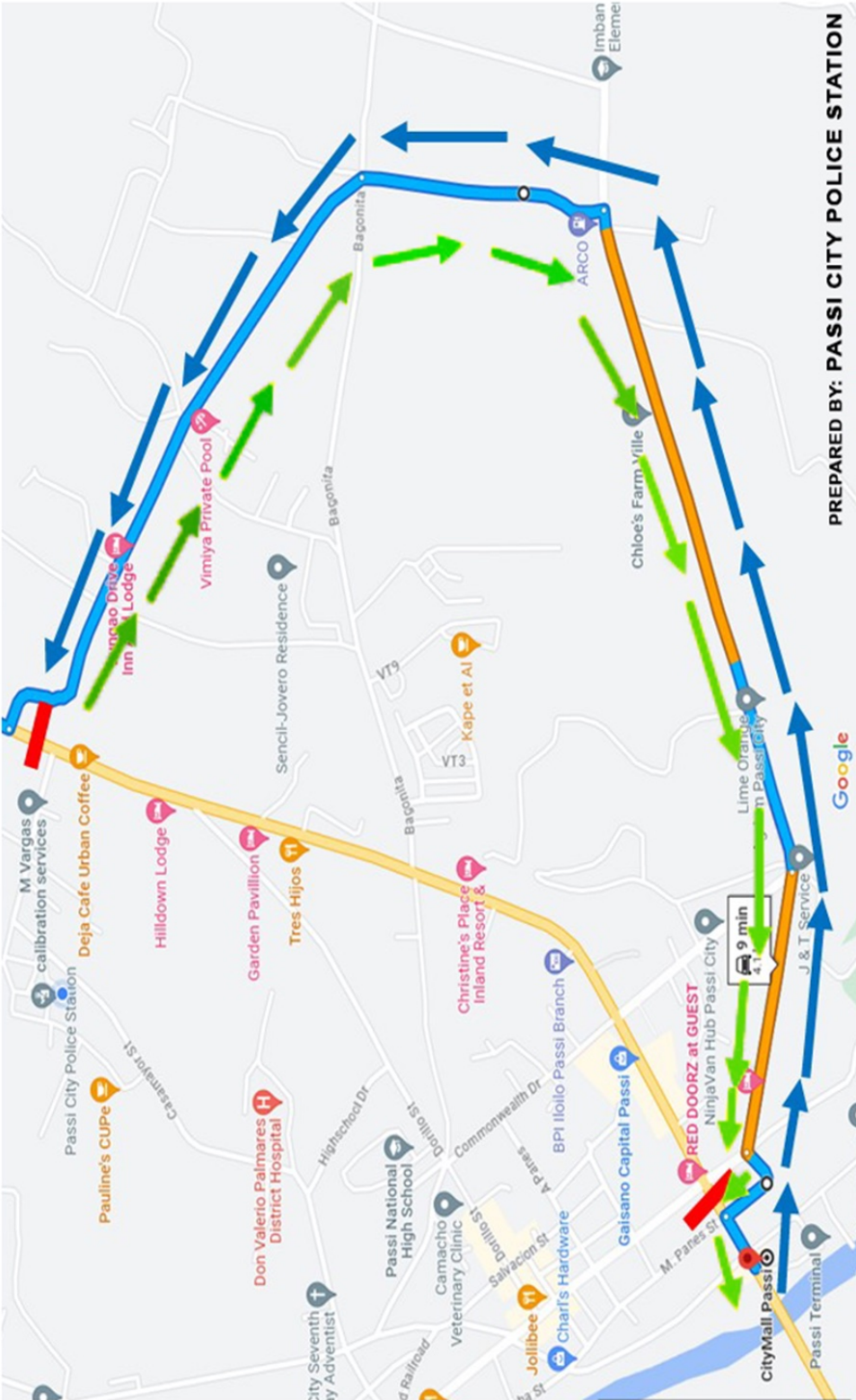


DEPLOYMENT:

- Parking Area - 20
- Traffic Management - 34
- TOTAL PNP DEPLOYED - 54**



TRAFFIC REROUTING



PREPARED BY: PASSI CITY POLICE STATION

LEGEND



ROAD CLOSURE



ILOILO BOUND TRAFFIC



CAPIZ BOUND TRAFFIC

CRISIS AND RISK MANAGEMENT

TRAFFIC AND SECURITY

The Committee on Traffic and Security is responsible for ensuring the safety and smooth flow of traffic, as well as maintaining security measures throughout the 18th National Scout Jamboree in the City of Passi, Iloilo from December 11-17, 2023. Specifically, the Committee has the following tasks:

- Manage and regulate vehicular and pedestrian traffic within the jamboree premises.
- Coordinate with local authorities to enforce security protocols and emergency response plans.
- Conduct regular patrols and surveillance to maintain a safe environment.
- Provide guidance and assistance to participants regarding traffic routes and safety protocols.
- Collaborate with event organizers to implement effective security measures.

CENTER LOCATION & FACILITIES AVAILABLE

The Jamboree Center is situated in Pintados de Passi Camp, Barangay Sablogon, Passi City, equipped with facilities including but not limited to:

1. Security checkpoints
2. Traffic control stations
3. Emergency response units
4. Communication hubs
5. Information centers

RULES & REGULATIONS

1. Adhere to speed limits, designated lanes, and parking areas. Follow traffic guidelines as directed by authorities.
2. Carry identification passes at all times. Report any suspicious activities to security personnel.
3. Familiarize yourself with emergency exits, assembly points, and follow instructions from security personnel during emergencies.
4. Firearms, sharp objects, illegal substances, and any items deemed hazardous are strictly prohibited within the premises.
5. Cooperate with security and traffic personnel for the safety and success of the jamboree.

CHAIRPERSON: Pltcol. Benjo Clarite 09985986221
(033-3115723)
CO-CHAIRPERSON: Paul D. Ligasan 09282792377

MEMBERS: LGU
Traffic Control Aides



CRISIS AND RISK MANAGEMENT

HEALTH AND SANITATION

The Committee on Health and Sanitation is responsible for the over-all maintenance of health and sanitation of all campers both in in-camp and off-camp activities. These include the solid waste management and treatment procedure, waste segregation scheme, garbage collection and disposal within the vicinity of General Headquarters, Sub-Camp Headquarters, Jambo Market, and toilet and bathroom facilities.

The committee has the following responsibilities:

1. Ensure that the establishments at the Jamboree Market comply with the Standard Sanitary Requirements for the safety of the campers and general public during the duration of the event.
2. Ensure that all establishments at the Jamboree Market are recorded and have valid Sanitary Permit.
3. Ensure that all establishment operators have Health Certificate, observe good personal hygiene and observe personal health and safety practices
4. Ensure zero case of any food and water borne diseases.
5. Ensure proper sewage disposal and solid waste management.
6. Check that all drinking water sources shall have a Certificate of Potability of Drinking Water issued by duly authorized personnel.
7. Monitor the dispensing of food and drink within the establishment which shall be in accordance with Chapter III – "Food Establishment" of the Code on Sanitation of the Philippines (P.D. No. 856) and its implementing rules and regulations.
8. Monitor the cleanliness and orderliness of every sub-camp.

CENTER LOCATION

Camp Site Headquarters and Sub-Camps

RULES & REGULATIONS

1. All scouts must adhere to the rules and regulations of the committee.
2. Everybody must observe good personal hygiene and proper hygienic practices at all times such as washing of hands after using the toilet and before and after meal.
3. Everyone must observe personal health and safety practices such as no smoking of tobacco, no drinking of alcoholic beverages, no spitting or blowing of nose, and no littering.
4. Participants suffering from a communicable or contagious disease shall be immediately reported and referred for treatment
5. Toilet facilities must be flushed and kept clean after using.
6. Trashes must be properly segregated and trash bins must be covered inside and outside the camp site.

CHAIRPERSON: Melven P. Oyard MD 09215065174

CO-CHAIRPERSON: Merlyn H. Cabañas RN 09122372655

MEMBERS:

DepEd

1. Annabelle Omega
2. Nida Patano
3. Luther E. Crucero
4. Saida P. Isiderio
5. El Jean Manajero
6. Gilyn L. Panes
7. Rhea Agramonte
8. Michelle S. Palmes
9. Ronagen M. Caspillo
10. Cherry Delfin
11. Kristine Joy P. Llorente
12. Cristine C. Carbolido
13. Josephine P. Sensoro
14. Jeanebe C. Padernal
15. Lizel P. Siva
16. Irene May P. Paciente
17. Dorothy P. Liquina
18. Susette P. Alivar
19. Jovelyn P. Demingoy
20. Jean E. Palitoc
21. Chenie P. Lallen

LGU

1. Ruby J. Ortillano
2. Belinda De Leon
3. Nepchie S. Pamplona
4. Cheenee Mae Agrasada
5. Mary Grace Catolico



CRISIS AND RISK MANAGEMENT

JAMBOREE INFIRMARY AND FIRST AID STATIONS

The Committee on Jamboree Infirmery and First Aid Stations is responsible for setting up strategic Medic / First Aid Stations and Infirmery in-camp and mobile medical facility to transport injured campers from identified immersion sites. The committee shall identify in-camp locations of staging, holding and treatment areas in cases of unprecedented scale of accident, which may occur during the event.

The committee is tasked to:

- Provide first aid treatment and triage at the first aid station.
- Provide proper medical treatment and close monitoring of patients in the infirmaries.
- Ensure that infirmaries and first aid stations have enough number of physicians, nurses and first aiders on duty.
- Ensure the availability of medicines and medical supplies in first aid stations and infirmaries.
- Transport patient at the infirmery in case of an illness or injury that cannot be treated at the first aid station.
- Refer and transport patient at the tertiary medical facility in case of an illness or injury that cannot be treated at the infirmery.
- Deploy ambulances to transport patients that cannot be treated from first aid stations to infirmaries to outside tertiary hospitals and transport them back safely to their campsite.

CENTER LOCATION & FACILITIES AVAILABLE

Camp Site Headquarters and Sub-Camps
Facilities available:

- Three (3) Infirmaries
- First Aid Stations in Sub-Camps
- Emergency Ambulance



RULES & REGULATIONS

1. All scouts must adhere to the rules and regulations of the committee.
2. Participants who have an underlying health condition must always inform their scout leader when participating in any activities.
3. In case of an emergency, they must promptly ask for the help of medical team on duty or an ambulance nearby.
4. Participants suffering from a communicable or contagious disease shall be immediately reported and referred for treatment
5. Participants must take care of themselves during the Jamboree. They must take precautions and carry proper equipment.

CHAIRPERSON: Melven P. Oyad MD 09074545345

CO-CHAIRPERSON: Wilma P. Silubrico MD, DIH 09286166156

MEMBERS:

Philippine Red Cross

Emergency Responders 09979922753

DepEd Medical Officers and
Nurses

Private Physicians

1. Dr. Rey Busque 09478907260
2. Dr. Roxanne Camina 09173208250
3. Dr. Hope P Lapating 09194784594
4. Dr. Maridel Panique 09209023157
5. Dr. Mary Ann Paranpan 09285045498
6. Dr Nenita Sumagpao FB account

DepEd Doctors & Nurses

- | | | |
|----------------------------------|---------------------------|-----------------------------|
| 1. Marko Molinos | 16. Carol Pauline Maderse | 30. Rose May P. Young MD |
| 2. Richard Rei Novilla | 17. Aimee Ruth Mendoza | 31. Elda Ronita Fandivila |
| 3. Steven Keith Estilo | 18. Ma. Leila Alamodin | 32. Ma. Corazon Porras |
| 4. Yvette Melisse | 19. Ronches Mark Aurelio | 33. Ma. Clarissa Ronzales |
| Salvacion | 20. Matt Anthony Ascura | 34. Ma. Theresa Sideno |
| 5. Jose Santillan | 21. Ailene Kew | 35. Jemma Quezon |
| 6. Ma. Jesica Rose Aguda | 22. Lalaine Maestro | 36. Josefina Traigo |
| 7. Roland Ahlin Cambas | 23. Joerena Armada | 37. Ma. Katherine Jardeleza |
| 8. Reda Mae Sobrejuanite | 24. Estefania Palec | 38. Annie Lou Galve |
| 9. Felamie Panes | 25. Alvin Aliligay | 39. Jennilyn Drilon |
| 10. Charmaine Melsan | 26. Marlene Nieva Añora | 40. Ellecon De la Cruz |
| Perasol | 27. Jethro Mirasol | |
| 11. Felie Lou Montefrio | 28. Jay Paluay | |
| 12. Raymond Santome | 29. Kris Joy Gustilo | |
| 13. Regina Marie Brown | | |
| 14. Hyacinth Sinoy | | |
| 15. Shyrin Juviesant
Castillo | | |

CRISIS AND RISK MANAGEMENT

SAFE FROM HARM AND LISTENING EAR

Safe from Harm and Listening Ears prevents inappropriate behaviour like abuse, bullying, discrimination, cultural misunderstandings, distressed individuals, and other forms of disrespect and harm, so everyone can feel safe at anytime. This committee deals with sensitive issues.

The functions, duties and responsibilities of Safe from Harm and Listening Ears Committee depends with the event/ situation with the assurance of safety and well-being of the participants

CENTER LOCATION & FACILITIES AVAILABLE

Every Sub-camp
One infirmary
Protective Desk at Brgy. Sablogon Brgy. Hall
One station at OCSWD Office, Brgy. Sablogon

RULES & REGULATIONS

1. Referral from concerned committee
2. Identification of the problem
3. Profiling
4. Intervention
5. Evaluation
6. Recommendation
7. Referral if needed/ Return to scout master or sub-camp

Note:
Western Visayas Medical Center is the referral hospital for serious cases.

CHAIRPERSON: Evelyn P. Payas, RSW

09288188588

CO-CHAIRPERSON: Dr. Kimberly G. Bernadas, DMD 09998668882

MEMBERS:

LGU

- | | |
|------------------------------|-------------------------|
| 1. Emily Panizal | 1. Gelin Pablico |
| 2. Arlyn S. Tolosa | 2. Ma. Lindy Pablico |
| 3. Pamela D. Cabayao | 3. Normarie B. Pamplona |
| 4. Jane Marie V. Emboltura | 4. Angeline Pacificar |
| 5. Jennifer A. Canindo | 5. Ma. Viena Jabon |
| 6. Lara Jill P. Panerio | 6. Wnelyn Palmes |
| 7. Anelie P. Palmares | 7. May Jean Borro |
| 8. Azucena U. Pacificar | 8. Lelita Peniero |
| 9. Mildred P. Palmares | 9. Mercy Pastrana |
| 10. Krishna Rodriguez | 10. Maricel Paniza |
| 11. Sarah Lama | 11. Irna Padernilla |
| 12. Hope P. Hibionada | 12. Meriam Panes |
| 13. Princess Diana Faeldonea | 13. Sherlyn Muyco |
| 14. Girly Padernilla | 14. Noeme Palma |
| 15. Maria Lourdes P. Sayson | 15. April May Diquinto |
| 16. April Joy L. Gasis | 16. Romelie Ann Dajay |
| 17. Rodelyn D. Catubig | 17. Jillmae Tamayo |
| 18. Elizabeth Hernaez | 18. Delyn Pacino |
| 19. Mary Jane Duga | 19. Jane Subano |
| 20. Jenie Centina | 20. Cheryl Ardiente |
| 21. Joeranza Palermo | 21. Mary Joy Pamonag |
| 22. Angie Padasay | 22. Karen Asonada |
| 23. April May Imas | 23. Yvonne Joy Panes |
| 24. Germiluz Anam-anam | 24. Jerome Hugo |
| 25. Jesusa Pedregosa | |

DepEd

1. Pinky P. Cia
2. Dayle P. Pabiona
3. Jolyn Grace D. Palma
4. Jessica Joy Banson
5. Lelina Amigable
6. Jose Ramon Calsado
7. Gerardo Altamia Jr.
8. Emelia Arcabal
9. Paoline Jean Pedregosa
10. Meriba Carnaje
11. Maritess Palma
12. Maricar Puchero
13. Roren Keshia Collado
14. Rizzalee Genova
15. Rodilyn Ituriaga
16. Jennyvib Almodiel
17. Joy Palma
18. Lovelyn Torteo



PUBLICITY AND PROMOTIONS

PRESS AND MEDIA RELATIONS

Press and Media Relations Committee plays a crucial role in managing an organization's communication with the public, media outlets, and other stakeholders. The specific functions of this committee during the 18th National Jamboree are as follows:

1. Media Outreach and Relationship Building. Identify and build relationships with key media contacts and regularly engage with journalists and media outlets to foster positive relationships.
2. Press Release Management. Draft and distribute press releases to announce important organizational news, events, or developments.
3. Establishment of a Media Center. Media center plays a vital role in ensuring effective communication between event organizers and the media, facilitating the reporting process, and creating a conducive environment for journalists to cover and convey news stories.
4. Livestreaming and Field Reporting. To strengthen the communication with the public about the 18th National Scout Jamboree using social media platform
3. Scheduling a Press Conference. This involves careful planning and coordination to ensure that the event is well-attended and that the necessary resources are in place for a successful interaction with the media.

CHAIRPERSON: Imelda D. Franco 09150057044

CO-CHAIRPERSON: Mhel Jun C. Dela Cruz 09173163702

MEMBERS:

LGU

1. Eden D. Franco
2. Marie Aubrey F. Pama
3. Herlen P. Adame
4. Kyla F. Padernal
5. John Angelo Arroyo
6. Yolanda Gazo
7. Alex C. Palmes
8. Analy Licera
9. Elvira P. Panase
10. Michelle Ebanen
11. Jojen Cerbo
12. Hannah Mae Chavez
13. Mark John Lascuña

DepEd

1. Crispin Pamplona
2. James Padios
3. Arsenia Juarez
4. Zoila Mae Panes
5. Miche Delfin
6. Ian Ralph Pagal
7. Gerardo Altamia, Jr.
8. Jelia P. Padernal
9. Eden Joy F. Lucasan
10. Arnie Rose Paciente
11. Kent Zachary Salcedo
12. Kessiah Desiree Imas
13. Jamela KC Palomo
14. Gerevelle Dawn Cerbulles

CENTER LOCATION & FACILITIES AVAILABLE

- Headquarters in DSWD Office
- SDO Multipurpose Building as the Studio
- City of Passi Arena



PUBLICITY AND PROMOTIONS

CONTENT CREATION (SOCIAL MEDIA & ONLINE PRESENCE)

Social Media Committee is a sub-committee of Publicity and Promotions Committee in charge of creating and posting content to Facebook and other social media platforms related to the 18th National Scout Jamboree.

The functions, duties and responsibilities of Social Media Committee are:

1. Collect and create content;
2. Post content to BSP page;
3. Plan the flow of information and manner of posting of content in the social media; and
4. Coordinate with other publicity and promotions sub-committees in the creation of content.

CENTER LOCATION

OCSWD Office, Brgy. Sablogon, Passi City

RULES & REGULATIONS

1. Like and share the Boy Scouts of the Philippines Facebook page.
2. Visit the BSP Facebook page for updates and news about 18th NSJ.

CHAIRPERSON: Imelda D. Franco 09150057044

CO-CHAIRPERSON: Dexter P. Diergos 09171629438

MEMBERS:

LGU

1. Eden D. Franco
2. Salve Grace Lozabañez
3. Edmar Balbon
4. Hannah Mae Chavez
5. Andrea P. Siaotong

DepEd

1. Margielyn S. Macalalag
2. Janet L. Molenilla
3. Desiree P. Lobiogo
4. Lelina M. Amigable
5. Riza E. Celebrado
6. Mary Lutz Panizales

PUBLICITY AND PROMOTIONS

DOCUMENTATION

The Documentation Committee is a sub-committee under Publicity and Promotions and connected to all committees of the 18th National Scout Jamboree.

It is in charge of documenting all the events/activities from Day 0 to Day 7.

It maintains records by storing data/photos for easy access.

- Collect important details/photos of the different events/activities and prepare a summarized report daily.
- Take photographs/record all activities conducted during the 18th NSJ.
- Ensure the consistency of the reports/documents/photos submitted.
- Prepare an album of the activities/events of the 18th NSJ.

CENTER LOCATION

Office of the DSWD, Passi City



CHAIRPERSON: Imelda D. Franco 09150057044
CO-CHAIRPERSONS: Ma. Lennie F. Pamposa 09298627204

MEMBERS:

DepEd

1. Lilia G. Castronuevo
2. Johnney P. Panizales
3. Caren D. Aliligay
4. Maricel S. Caspillo
5. Edgardo Gazo, Jr.
6. Ferlie Joy M. Lanaria
7. Mary Grace Tupaz
8. Gerald Gonzales
9. Marvin Subrida
10. Rustom Parle
11. Eden Joy F. Lucasan
12. Roy Hernan Paderes
13. Angel Grace B. Paciente
14. Marjohn S. Tropico
15. Jasnevyn P. Besares PhD
16. Rey Joseph P. Casandra
17. Rey P. Panizales
18. Josefa R. Are
19. Rogie Lynne F. Zegg
20. Juniel G. Dapat
21. Cherrilyn D. Panes
22. Hazel Ann P. Isanan
23. Cheryl P. Domingo
24. Rhoda C. Panaligan
25. Dawn C. Sanchez
26. Julianna Paulette Ligasan
27. Jhianaly D. Erestingcol
28. Ken Aldrich Pama
29. Ezra Lyka V. Palmes
30. Marie Alekza Xyrus Layese
31. Kate C. Sta. Maria
32. Alliaiah Jalleen P. Palmares
33. John Patrick Mendoza
34. Kessiah Desiree Imas
35. Kent Zachary Salcedo
36. Sophia Mae Balanueco
37. Jamela KC Palomo
38. Gerevelle Dawn Cerbulles
39. Paula Palmes

LGU

1. Eden D. Franco
2. Ronnel Padilla
3. Ronnie Castromayor
4. Mark John Lascuña
5. Julie Ann Parreño
6. Coleen Benedicto
7. Edgar Ceron
8. Ramie Pallado
9. Shane John Suple



JAMBOREE INFORMATION CENTER

JAMBO INFORMATION DESK/SATELLITE INFO CENTER

The information center situated at the National Scout Jamboree serves as a focal point designed expressly to meet the varied requirements of attending Scouts and their leaders. It functions as an all-encompassing resource hub, aiming to facilitate a seamless experience for all participants by providing essential information, aiding navigation, and ensuring safety and convenience throughout the event.

- Provide information about the jamboree's schedule, activities, and logistics.
- Assist Scouts, leaders, and the general public with inquiries, offering guidance on navigating the event grounds, activity locations, and program details.
- Furnish participants with essential information regarding the locations of basic necessities as needed.
- Organize a team to warmly greet and guide arriving participants in the identified entry points and terminals, providing them with information about the event and assisting with any initial queries.

CENTER LOCATIONS

1. Jambo Information Center
2. Satellite Information Center:
 - Iloilo International Airport
 - Roxas Airport
 - Caticlan Airport
 - Kalibo International Airport
 - Iloilo Seaport
 - Dumangas Seaport
 - Roxas Port
 - Caticlan Jetty Port
3. Information Desk in every sub-camp

CHAIRPERSON: Mae P. Buenaflor 09989859675
CO-CHAIRPERSONS: Rey P. Deatras PhD 09605959482
Atty. Joji Marie Palec CPA 09275682388

MEMBERS:

DepEd

- | | |
|-------------------------------|------------------------------|
| 1. Mrs. Jesusa Amador | 1. Ms. Josefa Legan |
| 2. Mrs. Geryl Cadion | 2. Lorelie C. Altamia EdD |
| 3. Ms. Mae Simpedes | 3. Mrs. Charee Celleros |
| 4. Mrs. Karen Polines | 4. Mr. Paul Emmanuel Darroca |
| 5. Mr. Glenn Suravilla | 5. Mrs. Connie Salinas |
| 6. Mary Ann Palma EdD | 6. Ms. Joy Clarence Pacardo |
| 7. Mrs. Jovie Ladot | 7. Mr. Irvin Kit Pabulayan |
| 8. Ma. Teresa P. Ituriaga PhD | 8. Crystel Jade Pagdato PhD |
| 9. Mrs. Michelle Palma | 9. April Luna Joy Brown PhD |
| 10. Ms. Hermie Paloa | 10. Mr. Rolando, Jr Paderna |
| 11. Mrs. Janalve Pecate | 11. Mr. Lezard Devecais |
| 12. Ms. Ma. Richel Pagdato | 12. Mrs. Ronalyn Baldonasa |
| 13. Ms. Ruby Palmes | 13. Mrs. Lanie Ligasan |
| 14. Mrs. Hope Demasu-ay | 14. Ms. Jorebel Fax |
| 15. Mrs. Jona Calise | 15. Mrs. Alma Federizo |
| 16. Mr. John Rephan Deatras | 16. Ms. May Joy O. Paborada |
| 17. Lorena Manderico PhD | 17. Mrs. Leslie Fernandez |
| 18. Mrs. Liza Palmes | 18. Mrs. Girlie Esguera |
| 19. Ms. Jesa Rose Bernardes | 19. Mr. Emmanuel Pagayon |
| 20. Mr. Billy Lastrado Jr. | 20. Mrs. Ma. Victoria Somosa |
| 21. Mrs. Rhea Joy Lebaquin | 21. Mrs. Mary Joy Dorillo |
| 22. Mrs. Jipi Moleño | 22. Mrs. Aira Sesdoyro |
| 23. Mrs. Sunny Grace Libo-on | |

LGU

1. Rian Rem C. Gonzales
2. Jimmuel S. Lalantacon
3. Gelverth C. Aguilaro
4. Joan M. Padrones
5. Mary Jane C. Palmes
6. Mary Natalie O. Japitana
7. Francis A. Palmes
8. Dariel Jyd D. Lauron
9. Jenelie C. Torilla
10. Stephen Palma
11. Karla Mae P. Ebacuado
12. Narlou V. Moleño
13. George Albanes Jr
14. Leonel John Alan
15. Rellden Ambrocio
16. Ivey Kristine Lalantacon
17. Geroni Robert Delgado
18. Shara Mae Adio
19. Reynante Adame
20. Allen John Gonzales
21. Yvonne Marie Paclibar
22. Salome Dequito
23. Gerard Steven Montero
24. Reynan Palma

SCOUT SUPPORT CENTER

SCOUT SUPPORT HOTLINE

This committee is in charge of all inquiries, requests, and complaints for the whole duration of the 18th National Scout Jamboree. It plays a crucial role in ensuring effective communication, assistance, and problem resolution for participants having issues. As such, all information, services, and facilities must be available to all hotline attendants to make transactions fast, efficient, and effective.

1. Assist the participants through a phone call on the following concerns:

- a. accommodation facilities
- b. transport groups
- c. health emergency facilities
- d. nearby restaurants
- e. water stations
- f. gas stations
- h. other queries

2. Provide timely and accurate information for the people with concerns and refer them to the appropriate committee involved that can help them solve the issue or problem

CENTER LOCATION

General Headquarters, Covered Court,
Brgy. Sablogon, Passi City

CHAIRPERSON: La-arni Trabado

09296936484

CO-CHAIRPERSON: Maryful Grace Pabiona

09070080159

MEMBERS:

LGU

- | | |
|--------------------------|---------------------------|
| 1. Mercy Basio | 1. Sheila Dapusala |
| 2. Loida Palmes | 2. Shiela May Panizales |
| 3. Llandro Pagtolon-an | 3. Philip Stephen Ledesma |
| 4. Daisy Tamayor | 4. Erna Pama |
| 5. Pauline Jade Palmares | 5. Jessie Padernal |
| 6. Regie Tamayor | 6. Eduardo Cerbas |
| 7. Donald Ortigoza | 7. Donna Roa |
| 8. Jessie Padernal | 8. Roxane Palmones |
| 9. Jay Padernal | 9. Ivan Señalista |
| 10. Samson Ayson | 10. Raymun Lequillo |
| 11. Jessica Palmares | 11. Marlyn Aguilar |
| 12. Michelle Palencia | 12. Ana May Cercado |
| 13. Evanne Joy Palma | 13. Suanie Palmares |

DepED

1. Jolly Aguirre
2. Majuna Deriada
3. Analiza Salarda
4. Alan Pornel
5. Rowena Dichosa



SCOUT SUPPORT CENTER

LOST AND FOUND CENTER

This committee will take charge for the maintenance of the LOST & FOUND CENTER.

Specifically, the committee will:

- Take charge of the Lost & Found items in the duration of the 18th National Scout Jamboree.
- Serve as support complement to other committees in the headquarters.

CENTER LOCATION & FACILITIES AVAILABLE

Main Headquarters, Brgy. Sablogon, Passi City

CHAIRPERSON: Salome Arevalo 09103558003
CO-CHAIRPERSON: Rosaphe B. Susteverio 09469574951

MEMBERS:

LGU

1. Richard Pastera
2. Noel Cia
3. Isidro Pagtolon-an
4. Mark Andy Cerbas
5. John Michael Palmares
6. Mellard Pallado
7. Rio Alarba
8. Arjohn Palmares
9. Charlyn Labatagos
10. Christi Jane Cabayao
11. Ronalyn Aposaga
12. Rod John Reigo
13. Robert Pilar
14. Christopher Royd Palomo

DepED

1. Mitchel T. Gumban
2. April Rose P. Ilagan
3. Nelia L. Diasanta
4. Jeanie L. Palomillo
5. Salvacion D. Pama
6. Rhea P. Deza
7. Rustom D. Parle
8. Jane G. Almanzor
9. Ruby Jay P. Padasay
10. Devine Grace Valo
11. Melinda Ceballos
12. Yolanda Ramos



MARKETING CREATIVES

Marketing Creatives Committee is responsible for producing inspired, visually appealing lay-outs and designs for tarpaulins, and other marketing collaterals. This requires artistic vision to integrate the theme and concepts, amplifying the events core message to its audience and target market.

CENTER LOCATION

Passi City College, Bacuranan, Passi City

CHAIRPERSON: Dr. Janice Jennifer Palmares 09214335997/09158307130
CO-CHAIRPERSONS: Rufino Gorantes 09271802212
Joseph Belonio 09093434258

MEMBERS:

PASSI CITY COLLEGE

- 1.Engr. Mylen B. Paderes
- 2.Jenille Villareal
- 3.Heriberto G. Ulgasan Jr.
- 4.Denmark Parreñas
- 5.Cris G. Cerbas
- 6.Hans Centeno
- 7.Kim Ladiet
- 8.Angel Pilarco
- 9.Jonieve Tungol
- 10.Mark Elven Ladiet
- 11.Vivian Padernal
- 12.Rodeline A. De Juan
- 13.Rachel C. Lanuza
- 14.Ma. Erika V. Esquerra
- 15.John Ryan V. Magno
- 16.Franklin P. Montaña
- 17.John Stephen S. Labordo
- 18.Nicko John A. Arcaño
- 19.Jed, S. Cubita
- 20.Christian S. Paches
- 21.Joshua Emmanuel G. Pastolero
- 22.Rey Cordada Jr.
- 23.Ohn Philip P. Palomo
- 24.Nikel Jose E. Mondido
- 25.Don Rainier D. Panizales
- 26.Kim Jahlen Morante
- 27.Algie Vhone Ancino
- 28.John Steven Cirilo
- 29.Simon Gabriel Patanindagat
- 30.Peter Paul Juanga
- 31.Martin Lagsub
- 1.Edrian Frenz Salarda
- 2.Jayson E. Pagcalibangan
- 3.Rogem P. Paches
- 4.Jhon Michael S. Jangayo
- 5.Karl Ian V. Paderogao
- 6.Jose Devine P. Palmes
- 7.Kim P. Palomaria
- 8.Kurt Justine E. Pagodpod
- 9.Christian Paul A. Labos
- 10.Bernard P. Villarte
- 11.Joshua D. Menduza
- 12.Harold R. Padernilla
- 13.Lester James P. Sombria
- 14.Marvin S. Pamplona
- 15.Eron Q. Ngalot
- 16.Ted F. Porras
- 17.Rushty Jay V. Lauresta
- 18.Jaylord N. Mantequilla
- 19.Ken S. Padernal
- 20.Reyremark A. Adame
- 21.Chinker Pagcalibangan
- 22.Jp Mombay
- 23.Chester Dave Imbing
- 24.Marc Zoren Rivas
- 25.Francisco Montaña
- 26.Carlo Castellano
- 27.June Mark Descalsota
- 28.Albert John Provido
- 29.Aljon Gabriel Dema-Ala
- 30.Reynald Mayang
- 1.Kenneth John C. Parreñas
- 2.Jenesis King L. Santillana
- 3.Harde Panes
- 4.Rolan B. Bito-Onon Jr.
- 5.Lhester Dave L. Panes
- 6.Jaspher P. Jito
- 7.Ivan C. Penuela
- 8.Georgei G. Aguilaro Jr.
- 9.Renz Miguel R. Queque
- 10.Selwyn L. Padillo
- 11.Jazmine Miller C. Landa
- 12.Stephen Gee Marc L. Camba
- 13.Dharen John Ruel Lamit
- 14.Ariell Jey E. Peñafiel
- 15.Rodel C. Amante
- 16.John Kenneth Imas
- 17.Jensen Palomado
- 18.Aira Lyn Castor
- 19.John Harold Cruz
- 20.Leojen Dequiña
- 21.Cutie Sarino
- 22.Christian Alain Collado
- 23.Rhyan Jay Del Calma
- 24.James Habania
- 25.Christian Samontanes
- 26.Rosmar Gonzalodo
- 27.Dwight Jay Ven Palmaira
- 28.Berny Son Vargas
- 29.Fredeloid Herbaliga
- 30.Perolyn Pauya

TOURISM

TOUR GUIDING & PASALUBONG-SOUVENIR CENTER

RULES AND REGULATIONS FOR TOURISTS, TRAVELERS, OR VISITORS WHEN ENGAGING IN LOCAL TOURING IN PASSI CITY

1. Respect Local Laws and Customs. Obey all local laws and regulations, including traffic rules, environmental protection laws, and cultural norms. Familiarize yourself with local customs to ensure respectful behavior.

2. Permits and Documentation. Obtain any required permits or documentation before engaging in specific activities, such as visiting protected areas or participating in certain events. Carry necessary identification, visas, or permits at all times.

3. Environmental Responsibility. Follow Leave No Trace principles, respecting the environment and wildlife. Dispose of waste properly and use designated trails and paths.

4. Cultural Sensitivity. Respect local customs, traditions, and religious practices. Ask for permission before taking photographs, especially in sensitive or sacred areas.

5. Noise and Behavior. Keep noise levels to a minimum, especially in residential areas or natural settings. Avoid disruptive or disrespectful behavior in public spaces.

6. Safety Guidelines. Adhere to safety guidelines provided by tour guides or local authorities. Be aware of emergency evacuation routes and procedures.



7. Restricted Areas. Stay out of restricted or prohibited areas, as indicated by signs or local regulations. Respect private property boundaries.

8. Health and Safety. Adhere to health and safety guidelines, including those related to the current public health situation. Seek medical assistance if needed and follow any quarantine or health protocols.

9. Littering and Pollution. Dispose of waste in designated bins and avoid littering. Contribute to maintaining the cleanliness of the destination.

10. Emergency Contact Information. Keep a list of local emergency contact numbers. Inform someone about travel plans and check-in regularly.

11. Water Conservation. Use water responsibly, especially in areas facing water scarcity. Follow any water conservation guidelines provided by local authorities.

12. Public Transportation. Follow rules and etiquette when using public transportation. Use designated stops and follow any guidelines provided by transportation authorities.

13. COVID-19 Protocols. Adhere to any specific COVID-19 protocols, such as mask-wearing, social distancing, and vaccination requirements IF IMPOSED.

TOURISM

TOUR GUIDING & PASALUBONG-SOUVENIR CENTER

CENTER LOCATION

The Tourism-Local Tour Guiding office is situated within Camp Pintados de Pasi, specifically inside the Pasalubong Center

CHAIRPERSON: Gina Palmares 09954370761

CO-CHAIRPERSONS: Christopher G. Aguilar 09707603720

Evelyn P. Villanueva 09076312709

MEMBERS:

LGU

1. Aiza Palermo
2. Gerald Panizal
3. Frances Rabee Miles Payas
4. Allen Rod Payas
5. Freddie Gonzaludo
6. Robert Lapating
7. Ryan Kent Aguilar
8. John Rick Padernal
9. Dunkin Karize Sumalantar
10. Trisha Pabiona
11. Alex Legada
12. Reonel Oñada
13. Ma. Gezze Lynn Villaruel
14. Charlene Mae Sindol
15. Ma. Nelva Jarell

1. Francis Palmes
2. Elmer Ceballos
3. Mariel Dotillos
4. Henry Pacardo
5. Kenneth Ladiet
6. Joe-An Leal
7. Jammie Cerbas
8. Jacqueline Yanson
9. Ma. Emily Palomo
10. Michelle Ann Galido
11. Mary Grace Palmares
12. Jose Aldan Belonio
13. Ma. Jovy Lamera
14. Maila Velasco
15. Alyssa Dawn Arambala

DEPED

1. Shrllyn Mae P. Pinque
2. Chenie Marie P. Rebaño
3. Ariane P. Palmes
4. Claud L. Cderdania
5. Lavenia G. Palomo
6. Shem P. Pagurayan
7. Sheila Mae P. Pacardo



TOURISM

WELCOMING PERFORMANCES

The Welcoming Performances is a sub-committee under the Tourism Committee. It is tasked to perform a welcome presentation during the arrival of the guests and participants of the 18th National Scout Jamboree. Fifty (50) selected students compose the performing group to showcase the culture, arts, and talents of Passinhons through a Pintados de Pasi Tribe presentation.

CHAIRPERSON: Gina Palmares 09954370761
CO-CHAIRPERSON: Jenelyn E. Pama 09982301317

MEMBERS:

LGU

1. Robert P. Lapating
2. Allen P. Payas

DEPED

1. Maria Rebecca Torda
2. Noeme Balindoa
3. Gilna Baranggan
4. Issa Marie P. Alarba
5. Jackie Lou P. Sazon
6. Kristoffer Paborada
7. April Rose Mallorca



TOURIST ATTRACTIONS



AGCARARAO MOUNTAIN VIEW
Brgy. Jaguimitan, Passi City
Contact Person: Jonabel Arcenal
Contact Number: 09386658008

Discover Agcararao Mountain View, a recently established tourist destination nestled in the elevated terrain of Barangay Magdungao, specifically in Sitio Agcararao, Passi City. Owned by the family of former Binibining Pintados, Jonah Belle Capuy-Arcenal, this serene retreat in nature offers a perfect escape. Immerse yourself in the tranquil surroundings, as Agcararao Mountain View unveils a breathtaking 360-degree panorama, inviting you to leave your concerns behind and indulge in pure relaxation. Revel in the beauty that envelops you.

To reach this idyllic destination from the town proper, travel approximately 5 kilometers towards Bangga Bayan along the National Highway to Roxas after Passi City College. Keep an eye out for a prominent tarpaulin and flaglets on the right side of the highway, guiding your way to Agcararao Mountain View.

Passi City, renowned as a significant pineapple producer, has played a pivotal role in the industry for many years. Beyond its pineapple cultivation, the city boasts a diverse economic landscape encompassing fruit processing, wallboard production, metalworking, and cut-flower propagation. The locally crafted pineapple wine, jam, and fruit preserves have successfully carved a niche in the market, gaining recognition through exposure at various local trade fairs and exhibits.

Located at various Barangays Bitá-ogan, Sto. Tomas and Nueva Union in Passi City, Iloilo



Dac Farm

Brgy. Sto. Tomas, Passi City
Contact Person: Danna Ariola
Contact Number: 09474053662



Explore the charm of DAC FARMS RESORT, situated in Sto. Tomas, Passi City, Iloilo, an accredited agri-tourism farm site approved by the Department of Tourism. Immerse yourself in the warmth of Barrio hospitality at this perfect venue for in-house seminars, offering a delightful communion with nature.

TOURIST ATTRACTIONS



The Old Jalaur Railway Bridge, a rare survivor among the railroad bridges in Panay Island.

Situated in Barangay Pob. Ilaya, Passi City, this historical structure stands as a testament to the region's railway heritage.

Freedom Bridge (Railway Bridge)

Contact Person: Gina S. Palmares
Contact Number: 311-5757

Hidden from the eyes of many, the Bubog Tree, also known as "Lunok," thrives by relying on a host tree for its existence. Over the years, the Lunok gradually consumed the Bubog tree, leading to its decomposition and the formation of a hollow center, locally referred to as 'nagkweba.' Despite attempts to fell the tree due to its encroachment on the sugar plantation, locals hesitated as a superstition circulated – if one tried to cut the tree and the bolo mysteriously fell, they were allowed to proceed the next day; otherwise, it was believed that unseen supernatural beings, or 'taglugar,' inhabited the tree, rendering it untouchable. Today, this intriguing symbiosis and the mystical lore surrounding the Bubog Tree stand as a unique tourist attraction.



Lunok Tree

Brgy. Imbang Grande, Passi City
Contact Person: Brgy. Capt.
Edilberto Padios

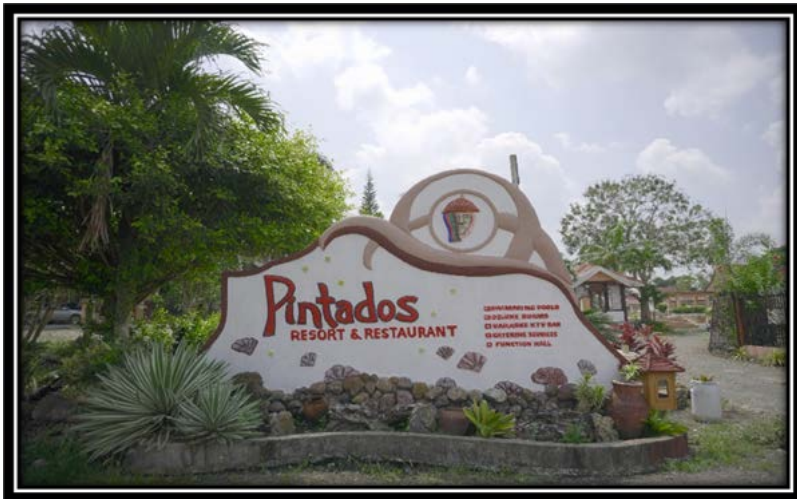


Nestled in Brgy. Bacuranan, Passi City, a Fourth-Class City in the Province of Iloilo, you'll find the Midway fresh Market and Restaurant. Founded by the family of Ricardo "Ricoy" Palmares, Jr., this establishment earned its name, Midway, owing to Passi City's central location in Panay, serving as a strategic pitstop, it caters to travelers from Iloilo City heading towards destinations in Aklan, Capiz, nearby municipalities, and vice versa.

Midway

Brgy. Bacuranan, Passi City
Contact Person: Mr. Ricardo Palmares
Contact Number: 311-5337

TOURIST ATTRACTIONS



Pintados Hotel and Restaurant

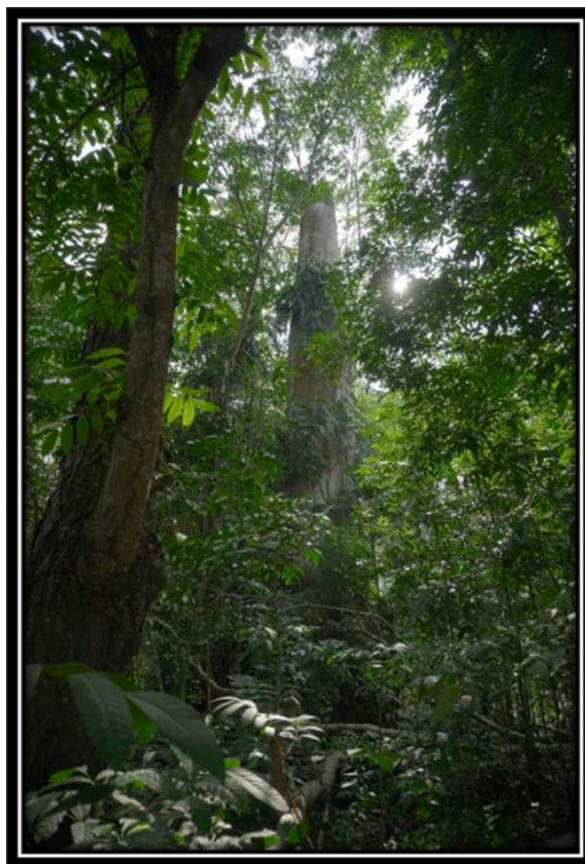
Brgy. Sablogon, Passi City
Contact Person: Roxanne Padilla
Contact Number: 311-5337

Regarded as one of the loftiest structures in Panay, this site was believed to be in use from its construction in the 1900s until the pre-war era. Popularly known as the "Burning Fields of the Rising Sun," it is thought to have served as an execution ground for the Japanese during the events of the Second World War.

Situated in Sitio Lungao, Barangay Imbang Grande, Passi City, this historical location offers a glimpse into the past and the wartime events that unfolded in the region.

Mascuvado Chimney

Brgy. Imbang Grande, Passi City
Contact Person: Brgy. Capt. Edilberto Padios



Christine's Place

Simeon Aguilar St., Passi City
Contact Person: Christine Popp
Contact Number: 09702313647

TOURIST ATTRACTIONS



St. William Parish Church

Garden of Saints
Virgen de Los Jardin
Contact Number: 311-5432

An architectural relic from the Spanish era, this church boasts a façade reminiscent of a fortress, characterized by substantial buttresses at its front and rear. Originally constructed in 1612 to replace smaller churches devastated by an earthquake, the design reflects its dual role as a Spanish military outpost.

Beyond its historical significance, the structure stands as a symbol of God's grace and presence. Since its establishment, the church has borne witness to numerous religious events, including Holiday Masses, Patronal Fiestas, and a myriad of other significant occasions.

You can find this historical gem at F. Palmares St., Passi City.

Garden of Saints (Jardin De Los Santos)

Situated on left side of the St. William Parish Church, the Garden is complemented by Avenida on its right side. Adorned with various life-sized statues, exploring this scenic spot would typically require approximately 30 minutes. This visit can be seamlessly combined with an exploration of the church itself.

Discover this captivating site at (Specific Location), Passi City.



Avenida de la Virgen Maria

TOURIST ATTRACTIONS



Constructed in 1930 under the administration of Mayor Jose Paloma, this building stands as a cultural legacy for the people of Passinhon.

Situated at Saligumba St., Passi City, it bears witness to the historical and cultural richness of the local community.

OLD MUNICIPAL HALL (Presidencia de Passi”)

Contact Person: Ms. Mae Buenafior
Contact Number: 311-6072

PLAZA PALOMA

Contact Person: Ms. Gina S. Palmares
Contact Number: 311-6072



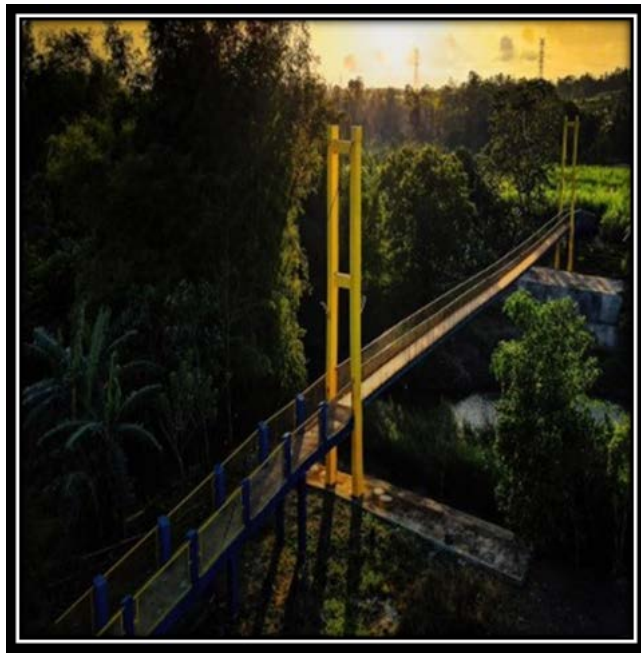
Being the inaugural Passinhon to lead a contingent of Ilonggo Guerillas, he orchestrated the first ambush against Japanese forces aboard a train destined for Iloilo City. This historic event unfolded at the railway station of Brgy. Bitá-ogan on August 25, 1942.

You can delve into this significant piece of history at Plaza Paloma, Passi City.

LT. ALBERTO PALEC PERLAS

Contact Person: Ms. Gina S. Palmares
Contact Number: 311-6072

TOURIST ATTRACTIONS



The Golden Bridge

Brgy. Imbang Grande, Passi City

Contact Person:

Marilyn Palmares

Contact Number: 09702313647

Contracted to facilitate the convenient crossing of the river for the residents of Sarapan in Agcagacay, this suspended bridge has become a prominent landmark for Brgy. Sarapan. Situated in Brgy. Sarapan., Passi City, it stands as both a practical infrastructure and a symbol of the community's connectivity.



MVP Farm

Brgy. Imbang Grande, Passi City

Contact Person:

Marilyn Palmares

Contact Number: 09702313647

PASALUBONG – SOUVENIR CENTER



Rosary Herbal Products

Contact Person: Ms. Tessie Pagay
Contact Number: 311-5186

Emerging from the philanthropic efforts of Ma. Tessie Pagay of Passi City Balanyos, The Rosary Herbal Products was founded in 2000. All products from this enterprise, including the Passi City Balanyos, have obtained approval. Rooted in a philosophy of harnessing local resources for the welfare and progress of the community, The Rosary Herbal Products is registered with the Department of Trade and Industry (DTI) and holds a license from the Food and Drug Administration of the Department of Health (DoH).

Explore the offerings of The Rosary Herbal Products at [Specific Location], Passi City.

PASALUBONG CENTER			
ESTABLISHMENT/ PRODUCT	OWNER /CONTACT PERSON	CONTACT NO:	PRODUCT PRICE
1. ROSARY HERBAL PRODUCTS	MA. TESSIE PAGAY	09208912095	
2. FABRIK	JANILYN DIVINAGRACIA	09773420293	
3. BREAD & BUTTER			
4. ATSARA PINEAPPLE JAM	RIZA CARBOLIDO		ATSARA- 50 BIG-75 PINEAPPLE JAM-
5. JBC PRINTING SERVICES	EDGARDO CANATA JR.	09063353872	T-SHIRT -300 KEYCHAIN-25 REF MAGNET -50
6. PINEAPPLE YEMA	GINJARA PALENCIA	09106164377	
7. COCONUT VIRGIN OIL	WILMER LIENO	09380945605	
8. ACRYLIC REF MAGNET	BALILING PANIZA		140
9. ATSARA POLVORON	KARLO MARTINEZ	09270460159	
10. BITSOBITSO LUMPIA	RENATO CHAVEZ		BITSO-12 LUMPIA-5
11. SOUVENIRS	GEZELYN VILLARUEL		KEYCHAIN-25 REF MAGNET-35 BALLPEN-35
12. BUCARILYO	SALVA		IBOS 3 FOR 25 PUTO 20 PER PCS. BUCARILYO 3
13. SOUVENIR ITEMS	JACINTO PALMES		
14. KEYCHAIN	ARIEL PULMONES	09476492532	
15. KEYCHAIN WALL DÉCOR	JARED QUIJANO	09665090893	KEYCHAIN

PASALUBONG CENTER



Personalized Mugs



Polvoron



Souvenir Items



Souvenir Items

Located at Pasalubong Center (in front of BSP Grand Arena)
Brgy. Sablogon, Passi City, Iloilo

JAMBO MARKET AND CONCESSIONAIRES

JAMBOREE MARKET: Passi City Local Jamboree Market Committee is a local organization dedicated to Souvenir Market, Dry Goods Market, and Trading and Fair Plaza

CENTER LOCATION

The Jamboree Market office is situated within Camp Pintados de Passi.

1. Office of the City Economic Enterprise, Passi City Public Market
2. Office of the City Treasurer, Passi City Hall
3. Jamboree Market

WET MARKET

CHAIRPERSON: John Arthur Palma CPA 033 3115110
CO-CHAIRPERSON: Nilo Pachejo 09605959010
MEMBERS:

LGU

- 1.Ma. Leizl J. Panes
- 2.Ma. Arlene P. Dinson
- 3.Jose Rodion P. Aguilar

DepED

- 1.Ana Liza P. Bogarso
 - 2.Ariane Peach P. Anata
 - 3.Arnel F, Abelarde
 - 4.Dary B.Pamonag
 - 5.Arnel A. Porcal
 - 6.Jeralyn Palma
 - 7.Lorena P. Bayona
- 1.Ma. Alyanna P. Payas
 - 2.Maricel P. Morales
 - 3.Ariel F, Pamplona
 - 4.Silven P. Agnes
 - 5.April Mae A. Cristobal
 - 6.Leah Mae Fordan

TRADING AND FOOD PLAZA

CHAIRPERSON: John Arthur Palma 033 3115110
CO-CHAIRPERSON: Joe Vlady Trompeta 09605040889
MEMBERS:

LGU

- 1.Rammer P. Pama
- 2.Leodiline P. Villanueva
- 3.Mervic P. Gabuyog
- 4.Regina P. Consumo

DepED

- 1.Juris T. Panes, PhD
 - 2.Fema Granada
 - 3.Noreme P. Palomillo, EdD
 - 4.Rebecca F. Jimena
 - 5.Roche D. Payas
 - 6.Jeseneth P. San Luis
 - 7.Leofie A. Lumawag
 - 8.Cherryhel P. Gasis
- 1.Jezamae G, Licardo
 - 2.Felina F. Villafranca
 - 3.Cyril L. Lagrada
 - 4.Michelle D. Pueyo
 - 5.Carla P. Paclibar
 - 6.Gretchen Parreño
 - 7.Lory P. Sontillosa

DRY MARKET

CHAIRPERSON: John Arthur Palma 033 3115110
CO-CHAIRPERSON: Nelson Palma PhD 09399379552
MEMBERS:

LGU

- 1.Joefer P. Dotillos
- 2.Jean P. Pabilona
- 3.Marilyn C. Quidan

DepED

- 1.Roselyn P. Panizal
 - 2.Julie Ann E. Pablico
 - 3.Kriselle C. Villavende
 - 4.Mae Jean L. Amador
 - 5.Nesly D. Rodriguez
 - 6.Emily M. Paborada
 - 7.Shella P, Palmes
 - 8.Mahelda D, Duran
- 1.Yen P. Da-anoy
 - 2.Carl Mayen S. Arenga
 - 3.Mae B. Golaylay
 - 4.Pearly Mae J. Ardiente
 - 5.Ma. Rosie H. Dela Cruz
 - 6.Analou M. Suedad
 - 7.Ma. Naheda P. Pabulayan



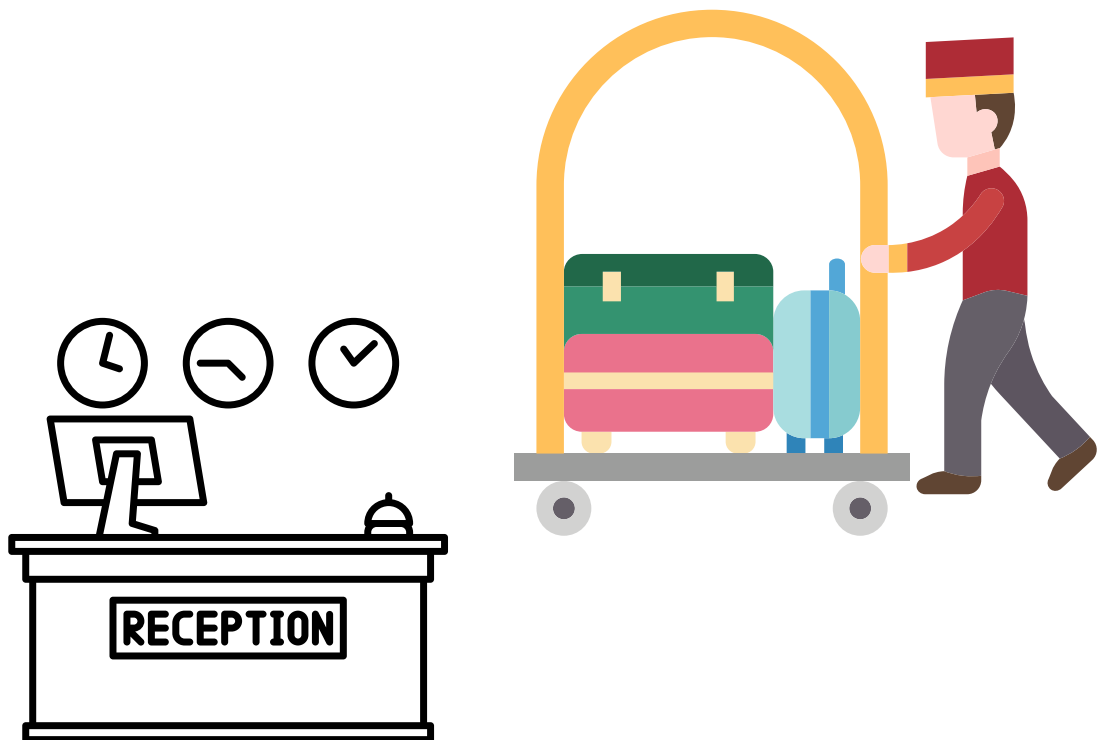
GUEST SERVICES

Guest services encompass a wide range of personalized services offered to guests during their stay on the 18th National Scout Jamboree. The services focus on creating a memorable and comfortable experience for each guest. From the moment guests arrive in the venue until the last day of his/her stay, guest services play a pivotal role in ensuring their satisfaction.

At its core, guest services are designed to exceed guests' expectations, making them feel valued and attended to. Typically dressed in a uniform or formal attire, guest services representatives are known for their courteous behavior and professional demeanor. Guest services involve anticipating and fulfilling guests' needs, often before they even express them.

The following are the duties and responsibilities of the committee:

- Guide and assist guests during the 18th National Scout Jamboree.
- Greet guests upon arrival and make them feel welcomed.
- Accommodate general and unique requests of guests.
- Assist guests who are in attendance at the different events of the 18th National Scout Jamboree.
- Direct the guests to their assigned seats and provide copies of the program if available.
- Answer guests' queries.



GUEST SERVICES

GUEST RECEPTION

CHAIRPERSON: Dr. Rossana Tacder 09369724461

CO-CHAIRPERSONS: Joliven S. Maratas 09288110073

Arlene B. Agnes 09158453497

MEMBERS:

LGU/PASSI CITY COLLEGE

- 1.Rhea P. Gayoso
- 2.Donaly Erestingcol
- 3.Tulip Grace Arong
4. Criza Mae Padernal
5. Gerthrude Sorianosos
6. Remely Sobrevega
- 7.Julie Ann Ludero
8. Marjorie Menguis
9. Sweetlyn Barrientos
10. Fritz Mae Palma
11. Gweneth Sta. Ana
12. Jebell Lagutang
- 13.Christine Ramon
14. Krixia Leigh Villanueva
- 15.Khyte Catig
16. Charlene Aguilar
- 17.Angela Chalaka Parambel
18. Kimberly Belicano
- 19.Cris Joy Castor
20. Regine Macaya
21. Mclyn Cabugas
22. Sophia Sandara Sara
- 23.Jude Kate Pamplona
24. Quenzy Caro
25. Relyn Gallego
26. Patricia Parreno
- 27.Neljean Jabagat
- 28.. Pearlyn Laponga
29. Leomen Peloquero
- 30.Patricia Lozanes

- 1.Arian Nhecole Itucas
- 2.Jonna Dumali
- 3.Clynne Roquero
- 4.Francez Silvestre
- 5.Regine Cahilo
- 6.Chona Chine Fille
- 7.Melony Agregado
- 8.Zyneth Joy Dador
- 9.Rheijane Juare
- 10.Leny L. Paclibar
- 11.Jinessa Ross P. Baytos
- 12.Shellame E. Cruz
- 13.Katherine Joy F. Jangayo
- 14.Jeanette D. Cantor
15. Maykha Grace B. Pagayon
- 16.Jenny Rose S. Padre-E
- 17.Alexandrea Kathrine B. Gonzales
18. Joseph F. Cuales
19. John Cloyd Sumagaysay
- 20.Diana Humpay
- 21.Kechia Marie Parcon
- 22.Erlyn Banzales
- 23.Cris Ann Fernandez
- 24.Bea Ortiz

DepED

- 1.Mary Lutz Panizales
- 2.Ma. Noli Ann Palencia
- 3.Joyce-Ann Paginado
- 4.Angel Emboltura
- 5.Jenny Joy Nalangan
- 6.Ivy B. Parreno
- 7.Christine Joy Trevilegio
- 8.Gilna D. Barangan
- 9.April Rose S. Indencia
- 10.Rosalinda P. Paclibar
- 11.Kharen C. Castillo
- 12.Fritzel C. Padrones
- 13.Jessica P. Ramos
- 14.Mary Jean A. Catolico
- 15.Receli P. Imas
- 16.Sherry Mae Suaberon
- 17.Ritchie Agosto



GUEST SERVICES

VIP RELATIONS

CHAIRPERSON: Rhea Gayoso 09482424498
CO-CHAIRPERSONS: John Mark Apellado 09676772451
Mary Joy Cachero 09163750474

MEMBERS:

LGU/PASSI CITY COLLEGE

- | | | |
|-----------------------------|--------------------------|------------------------------------|
| 1. Dr. Rossana Tacder | 1. Melyn Cabugas | 1. Chona Chine Fille |
| 2. Donaly Erestingcol | 2. Sophia Sandara Sara | 2. Melony Agregado |
| 3. Tulip Grace Arong | 3. Jude Kate Pamplona | 3. Zyneth Joy Dador |
| 4. Criza Mae Padernal | 4. Quenzy Caro | 4. Rheijane Juare |
| 5. Gertrude Sorianosos | 5. Relyn Gallego | 5. Leny L. Paclibar |
| 6. Remely Sobrevega | 6. Patricia Parreno | 6. Jinessa Ross P. Baytos |
| 7. Julie Ann Ludero | 7. Neljean Jabagat | 7. Shellame E. Cruz |
| 8. Marjorie Menguis | 8. Pearlyn Laponga | 8. Katherine Joy F. Jangayo |
| 9. Sweetlyn Barrientos | 9. Leomen Peloquero | 9. Jeanette D. Cantor |
| 10. Fritz Mae Palma | 10. Patricia Lozanes | 10. Maykha Grace B. Pagayon |
| 11. Gweneth Sta. Ana | 11. Diana Humpay | 11. Jenny Rose S. Padre-E |
| 12. Jebell Lagutang | 12. Kechia Marie Parcon | 12. Alexandra Kathrine B. Gonzales |
| 13. Christine Ramon | 13. Erlyn Banzales | 13. Joseph F. Cuales |
| 14. Krixia Leigh Villanueva | 14. Cris Ann Fernandez | 14. John Cloyd Sumagaysay |
| 15. Khyte Catig | 15. Bea Ortiz | |
| 16. Charlene Aguilar | 16. Arian Nhecole Itucas | |
| 17. Angela Chalaka Parambel | 17. Jonna Dumali | |
| 18. Kimberly Belicano | 18. Clynne Roquero | |
| 19. Cris Joy Castor | 19. Francez Silvestre | |
| 20. Regine Macaya | 20. Regine Cahilo | |

DepED

1. Hanah Mae Alvarez
2. Mafy Jean Dorado
3. Mary Esther Calambro
4. Karissa Mae Tagonon
5. Mary Joy B. Alaro
6. Glenda Matus
7. Janet Porras
8. Irish Marie Casumpang
9. Mela May Peñora
10. Micah Bethany Antino
11. Arlen Joy Carbolido

FOREIGN RELATIONS

CHAIRPERSON: Randy Palomaria 09190044250
CO-CHAIRPERSONS: Nescel Panes PhD 09173004572
Dayle Pabiona 09605959005

MEMBERS:

LGU/PASSI CITY COLLEGE

- | | |
|------------------------|--------------------------|
| 1. Dr. Rossana Tacder | 1. Catherine Paciente |
| 2. Donaly Erestingcol | 2. Andrew Arenó |
| 3. Tulip Grace Arong | 3. Kerren Joy Dotillos |
| 4. Criza Mae Padernal | 4. Joefel Dominic Bosque |
| 5. Gertrude Sorianosos | 5. Angie Tejas |
| 6. Remely Sobrevega | 6. Arlyn Paciente |
| 7. Julie Ann Ludero | 7. Derwin Lapating |
| 8. Marjorie Menguis | 8. Leona Trinidad |
| 9. Sweetlyn Barrientos | 9. Keziah Pauya |
| 10. Fritz Mae Palma | 10. Manilyn Q. Caro |
| 11. Gweneth Sta. Ana | 11. Catherine Pagayon |
| | 12. Wilvie Gella |
| | 13. Shemm Galvez |
| | 14. Ana Mae Botero |
| | 15. Mary Joy Paniza |
| | 16. Mia Andrea Paches |

DepED

Secretariat:

1. Rinaluz Lacsí
2. Camile Grace Salmero
3. Karen Me Osano
4. Roste Servita



BSP SPORTS AND PHYSICAL PROGRAM

SPORTS AND PHYSICAL FITNESS AND GALAW PILIPINAS

This committee is in charge of the set of exercises and the performance of the DepEd National Calisthenics *Galaw Pilipinas* every morning starting on December 12 to December 17, 2023 at NSJ Grand Arena which will serve as a warm-up activity in preparation for the succeeding activities each day.

CENTER LOCATION & FACILITIES AVAILABLE

18th National Scout Jamboree Grand Arena

RULES & REGULATIONS

1. Participants are requested to attend the morning physical activity and to be able to join in the practice of the *Galaw Pilipinas*.
2. Master the steps of *Galaw Pilipinas* for proper execution.
3. Establish proper coordination with the committee for proper guidance and other details of the activity.

CHAIRPERSON: Randy P. Palomaria 09190044250

CO-CHAIRPERSONS: Elsie P. Serafico PhD 09503490995

Jaysse James P. 09913296112
Padilla

MEMBERS:

LGU

1. Rocelle Palermo
2. Rashwell Casera
3. Robin Bautista

DepED

1. Mary Jo Aliento
2. April Rose Mallorca
3. Kristoffer Ian Paborada



TRANSPORTATION

The Committee on Transportation is tasked to:

1. Provide transportation to National Service Team Participants Airport and Sea port to Pintados de Passi Camp.
2. Provide transportation to National Service Team during the activities.
3. Arrange vehicles for arriving and departing contingents between terminal points (airport, bus or train station, seaport) and the Jamboree site;
4. Arrange the issuances of bus, railway or air travel concessions and helps participants in facilitating their return journey;
5. Arrange vehicles for off-site activities;
6. Arrange shuttle service within the Jamboree site, if necessary;
7. Perform other tasks that may be assigned by the JOC.

CENTER LOCATION

LGU Motorpool

Note: Follow the designated area for pick up and drop off.



STANDARD FARE RATES

From City Proper to Camp Site

Regular	Php15.00
Student/Senior Citizen/PWD	Php12.00

CHAIRPERSON: Engr. Sherwin Palmares 09615276966
CO-CHAIRPERSON: Jurey P. Maratas 09456910258

MEMBERS:

LGU

1. Engr. Ricardo Paciente
2. Engr. Froilan Manejero
3. Engr. Dominic Palomo
4. Glenn Savedra
5. Nanabel Pontero
6. Ma. Celema Palomillo
7. Daphne Arevalo
8. Karen Quibingco

DepED

1. Ramonit Belascuain
2. Robert Dayot
3. Nory Aguilos



COMMUNICATIONS

CORRESPONDENCES/INVITATIONS

The Committee on Communications (Correspondences/Invitations) serves as a pivotal link between the organization (BSP Passi City Council) and its external contacts/stakeholders, ensuring smooth communication, fostering positive relationships, and upholding professional standards.

1. The committee is responsible for extending formal invitations to guests, speakers, or organizations for events, meetings, conferences, or any relevant functions. This involves drafting invitation letters, coordinating schedules, and ensuring proper follow-up.

2. The committee also manages incoming and outgoing communications as a key task. The committee handles official correspondence, responds to inquiries, and maintains communication channels with relevant stakeholders. This may involve drafting letters, emails, or other forms of communication.

3. The committee ensures adherence to established protocols and etiquettes in all forms of communication and interaction. This involves maintaining professionalism and aligning with the organization's guidelines and standards.

4. The committee maintains records of all invitations sent, responses received, and correspondence exchanged. This helps in tracking the status of invitations and managing future engagements efficiently.

5. The committee collaborates with other committees within the organization to ensure coherence in invitations and correspondence related to various events or initiatives.

CENTER LOCATIONS

- Mayor's Office Conference Room
- DepEd-Schools Division of Passi City School Governance and Operations Office

RULES & REGULATIONS

1. Provide the Committee on Communications of event schedule and program (activities, ceremonies, and any changes or updates) to serve as reference.

2. Provide the committee information about transportation and arrival instructions (Guidance on arrival times, transportation options to the site, and accommodation arrangements upon arrival.)

3. Inform the committee about closing and departure (Information about the closing ceremony, departure procedures, and any post-event requirements or surveys.)

CHAIRPERSON: Analyn P. Sereño 09639063288
CO-CHAIRPERSON: Julieta P. Pachejo 09507975570

MEMBERS:

LGU

1. Ginalyn J. Padasay
2. Lyzl Pama
3. Razzyl Pama
4. Zander Pagal
5. Loverich Galan

DepED

1. Clerjoy Abunyan
2. Althea Marie Mejado
3. Jacqueline F. Futralan
4. Rinaluz D. Lacsí
5. Camile Grace P. Salmeron
6. Ma. Lucelia Paquingan



FINANCE MANAGEMENT

- > In-charge of Finance Management of the entire 18th National Scout Jamboree Committees.
- > Lead the strategy on sponsorship initiatives and delegate task appropriately.
- > Ensure proper allocation of funds to different committees and activities.
- > Collect and record donations received in cash and in kind.
- > Verify and control the appropriation documents for National Scout Jamboree.
- > Process and record disbursements and liquidations in accordance to accounting and auditing rules rules

CHAIRPERSON: Rochille D. Palomo, CPA 09213645639
CO-CHAIRPERSONS: Donna Jane C. Palma, CPA 09177995859

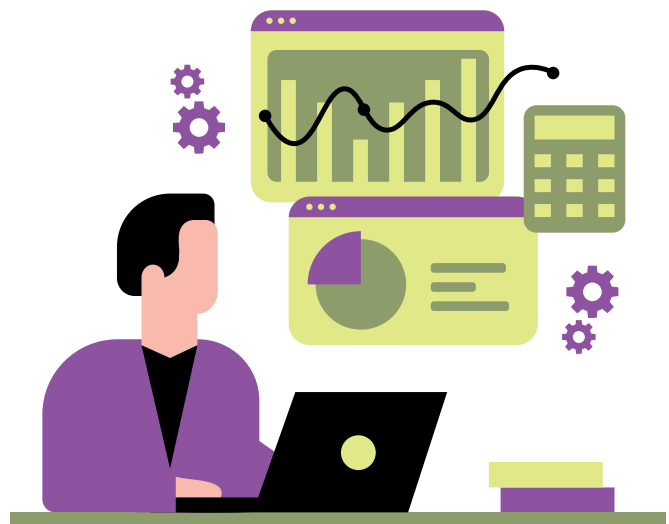
MEMBERS:

LGU

- Accounting
 1. Irene Mae P. Bastiero, CPA
 2. Melanie P. Fernandez
 3. Zenaida G. Puniel
 4. Ma. Cecilia P. Pineda
 5. Rhea L. Deriada
 6. Emy Connie D. Tejeroso
 7. Jeannepe P. Chavez
 8. Mary Joy P. Lorca
 9. Mildred P. Pagayon
- Treasury:
 1. Paquito J. Estandarte, Jr.
 2. Cristino P. Daquil
 3. Joy S. Dayot
 4. Vener V. Pasoquin
 5. Charlyn E. Pauya
 6. Annabelle V. Pinggoy
- Budget:
 1. Cyril P. Maloco, CPA
 2. Rowena P. Alejandro
 3. Karen A. Collado
 4. Ryne P. Castellano
 5. Alona Ann D. Padios

DEPED

- Accounting
 1. Emily L. Padernal
 2. Marizol L. Socillos
 3. Viola Padios
 4. Kristal Casa
 5. Honey Lee V. Guzman
- Budget
 1. Ma. Merlissa Palmares
 2. Khela Mhe Osano



SCHEDULE OF ACTIVITIES

TIME/DAY	DAY 0 : SUN 10 DEC 2023	DAY 1: MON 11 DEC 2023	DAY 2 : TUE 12 DEC 2023	DAY 3 : WED 13 DEC 2023	DAY 4 : THU 14 DEC 2023	DAY 5 : FRI 15 DEC 2023	DAY 6 : SAT 16 DEC 2023	DAY 7 : SUN 17 DEC 2023
0500-0600 H				Wake Up – Wash Up – Reveille – Morning Routine – Religious Services – Scout's Own				
0600-0700		Grand Parade	Tree Planting	Physical Fitness – Breakfast – Camp Inspection – Flag Ceremony <i>Scouts Fun Run</i>				
0700-0800	Sunday Mass / Setting up of Modules and Activity Areas	Contingents Heads Meeting			Jamboree Main Modules Special Activities (Onsite and Offsite Events) SPECIAL ADULT ACTIVITY		Galaw Pilipinas • KID/KAB Holiday • Street Dance Fest • Scout Youth Forum • Fancy Drill	Duty to God Service Jamboree Clean-Up Brigade
0800-0900								
0900-1000								
1000-1100	Hauling of Supplies and Materials							
1100-1200								
1200-1300								
FRIENDSHIP AND CAMARADERIE LUNCH AND CULTURAL EXCHANGE - REST PERIOD								
1300-1400	NST Trainings/ Orientation by Modules and Activities Module Dry Run and Rehearsals	GRAND OPENING CEREMONIES			Jamboree Main Modules Special Activities (Onsite and Offsite Events) SPECIAL ADULT ACTIVITY Scout Advancement & Merit Badge Center (Merit Badge Counseling and Board of Review)		• First Aid and Rescue Olympics • Native Games • Scout Rally • Skill-O-Rama • Showando • Scout Quiz Bee • Friendship Hunt • Trade-O-Rec	Break Camp and Camp Clearances Homeward Bound
1400-1500								
1500-1600								
1600-1700								
1700-1800								
1800-1900	NST/JPT Dinner	Camp Chiefs Welcome Dinner						
1900-2000	NST/JPT Fellowship Socials by Groups		Court of Honor ATAS Conclave	Wood Badge Reunion	Rovers Get Together	PASSI-klaban ng PASSI-ganda at PASSI-gwapo sa 18 th NSJ	GRAND CAMPFIRE AND CLOSING CEREMONIES	NST/JPT Volunteers Appreciation Night
2000-2100				PASSIKatan sa Luzon	PASSIKatan sa Visayas	PASSIKatan sa Mindanao		
2100-2200								
2200-2300								
2300								
END OF DAY ACTIVITIES – TAPS – LIGHTS OUT – REST PERIOD								



SUB-CAMPS

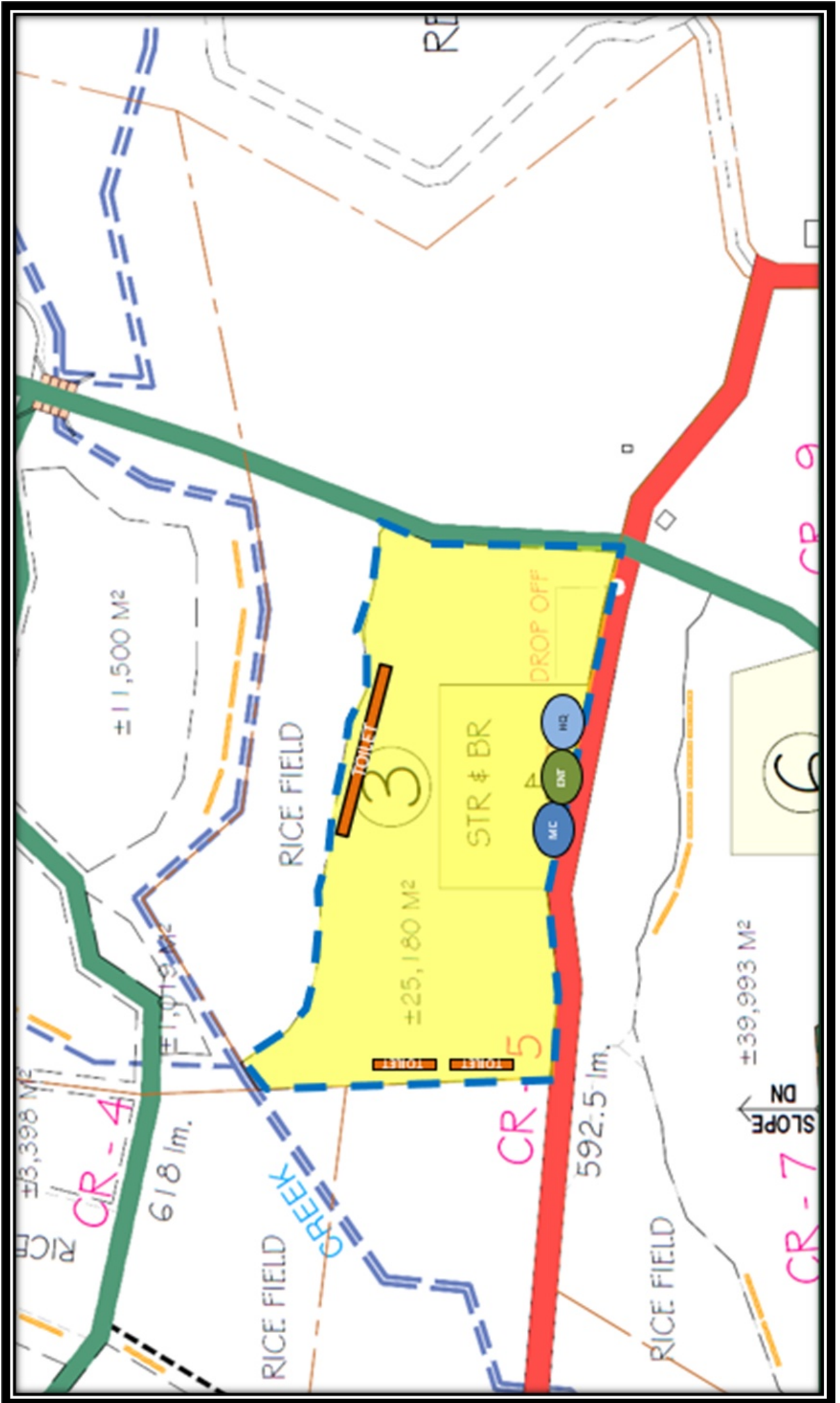
CAMP- WESTERN VISAYAS REGION -(WVR)



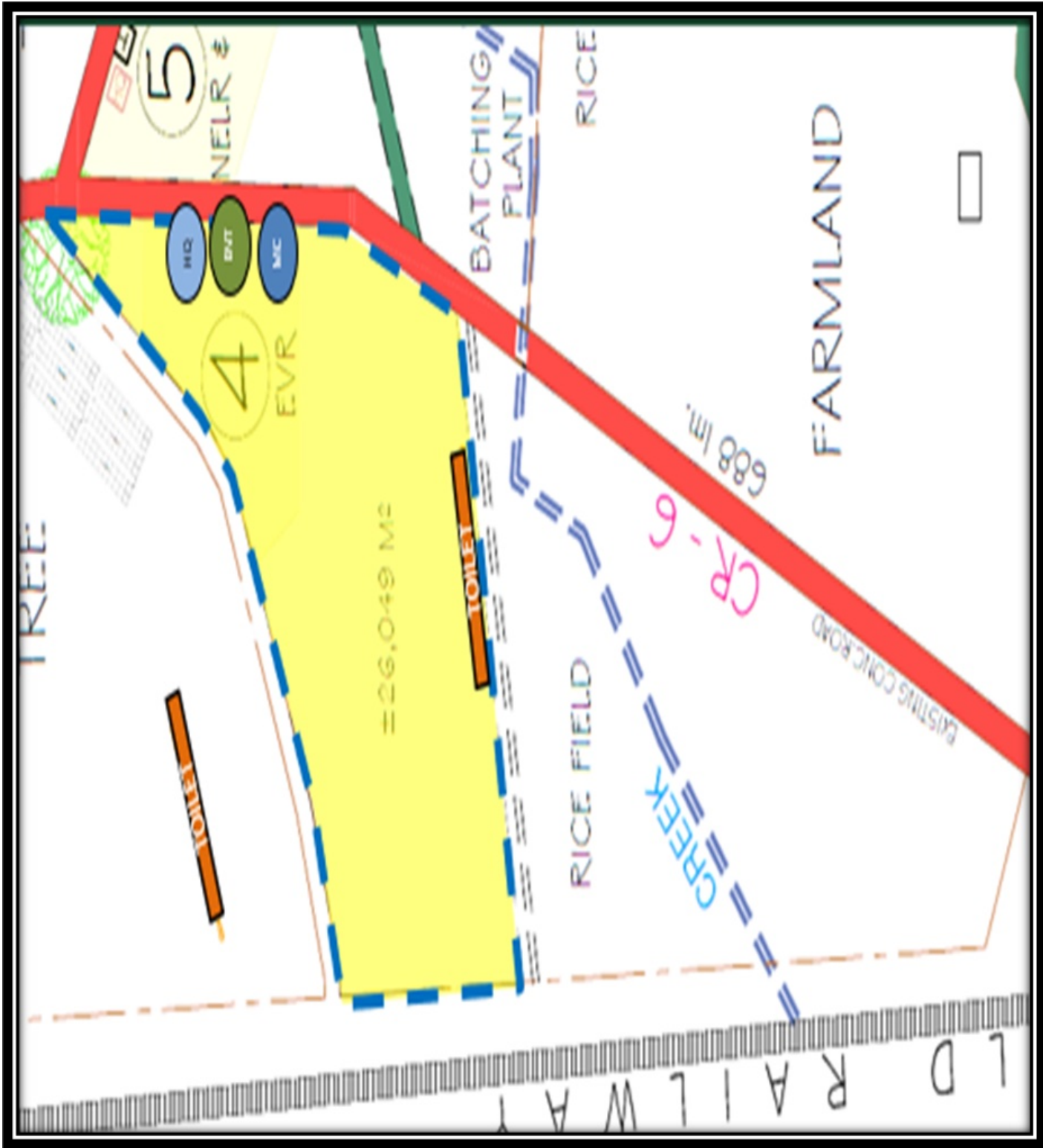
CAMP-CENTRAL LUZON REGION (CLR)



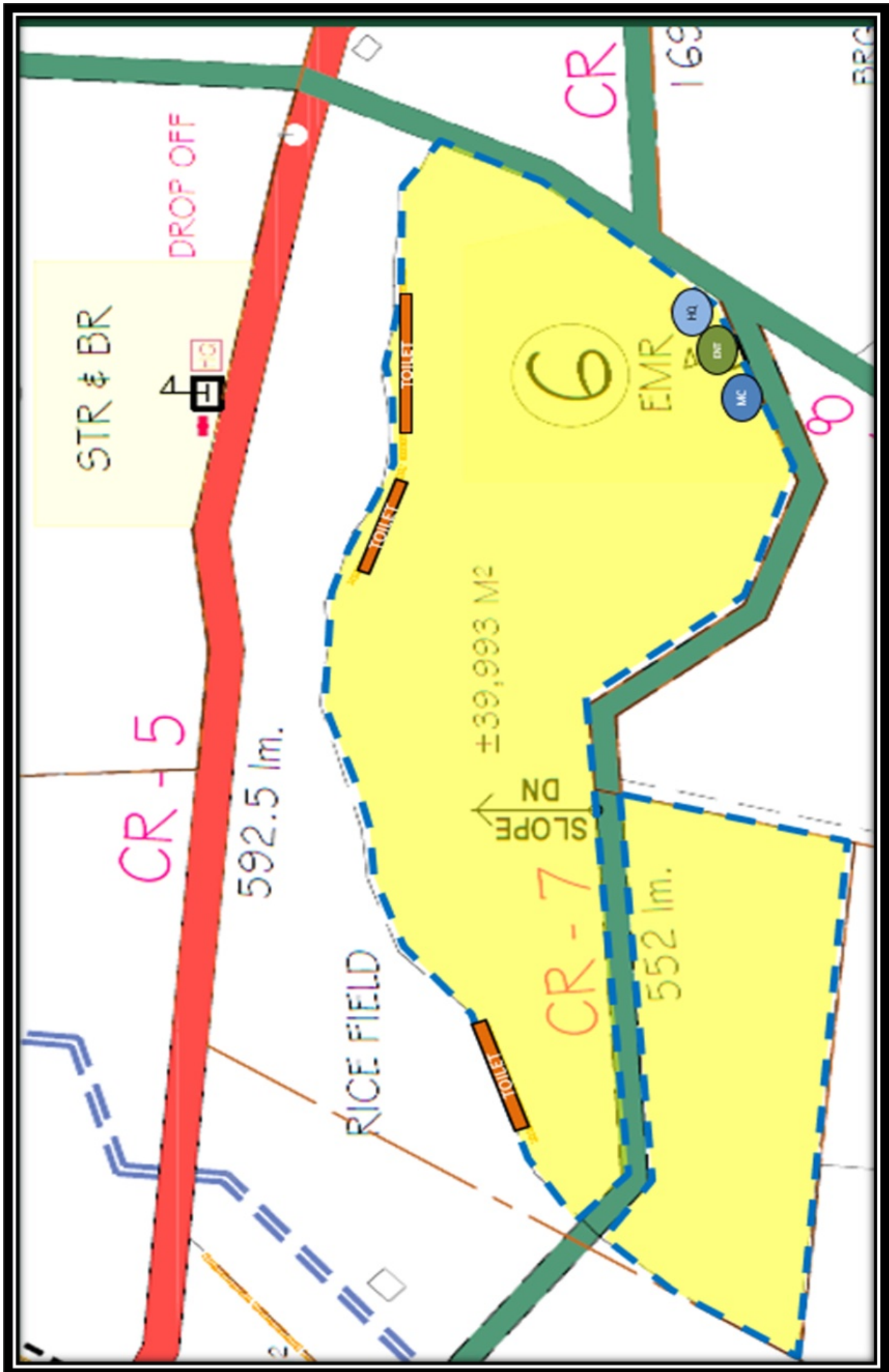
CAMP- SOUTHERN TAGALOG REGION & BICOL REGION (STR & BR)



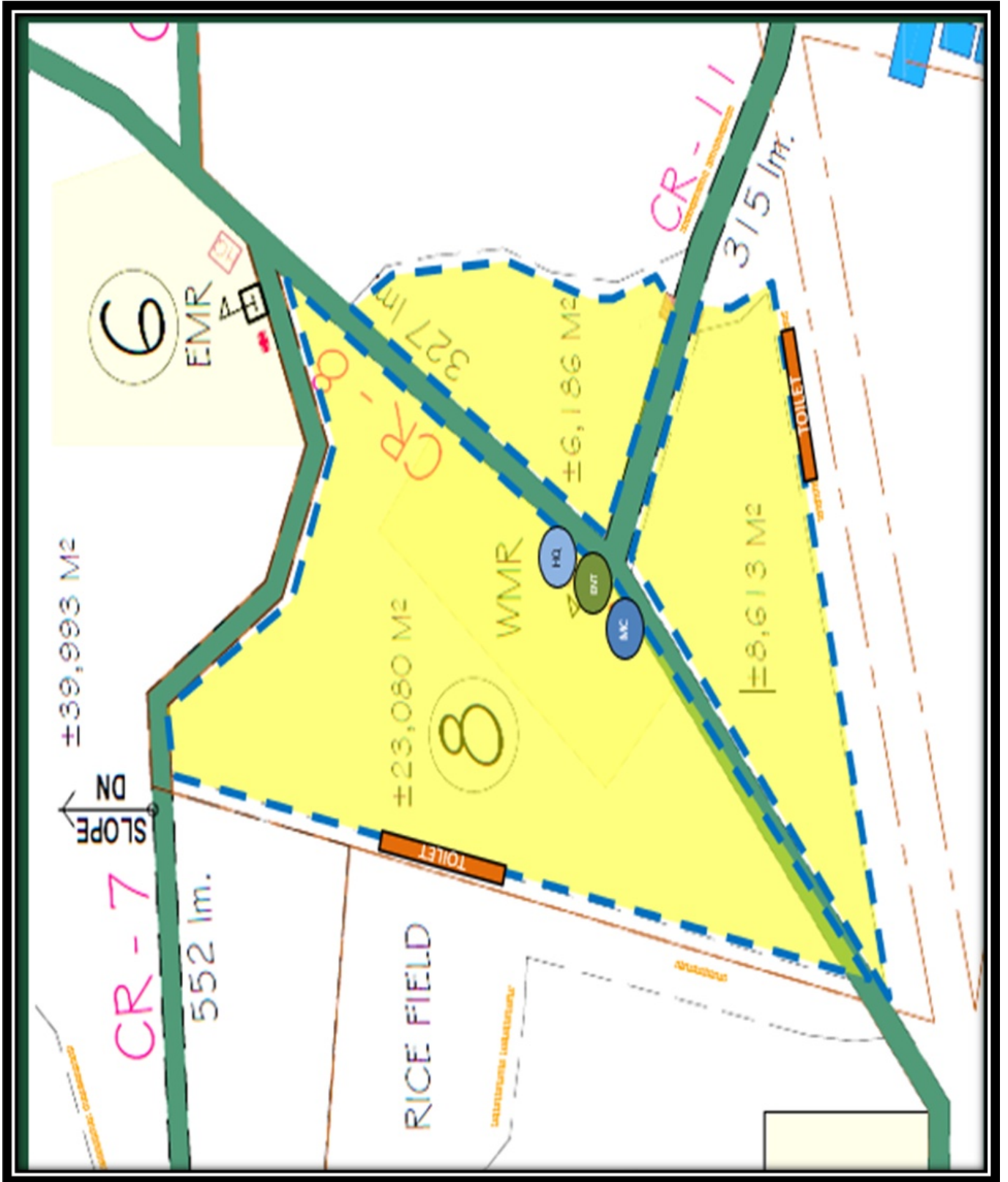
CAMP- EASTERN VISAYAS REGION (EVR)



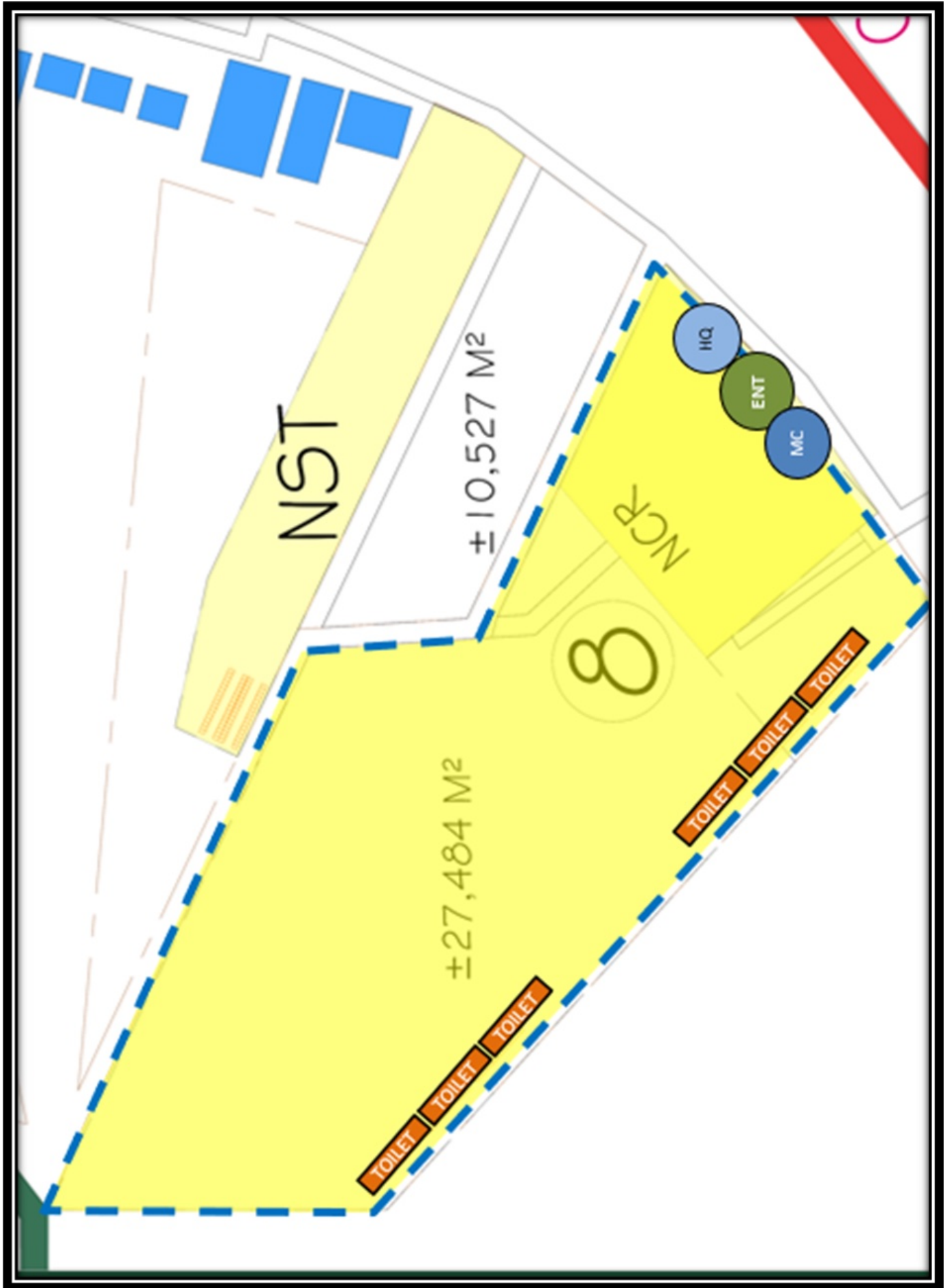
CAMP- EASTERN MINDANAO REGION (EMR)



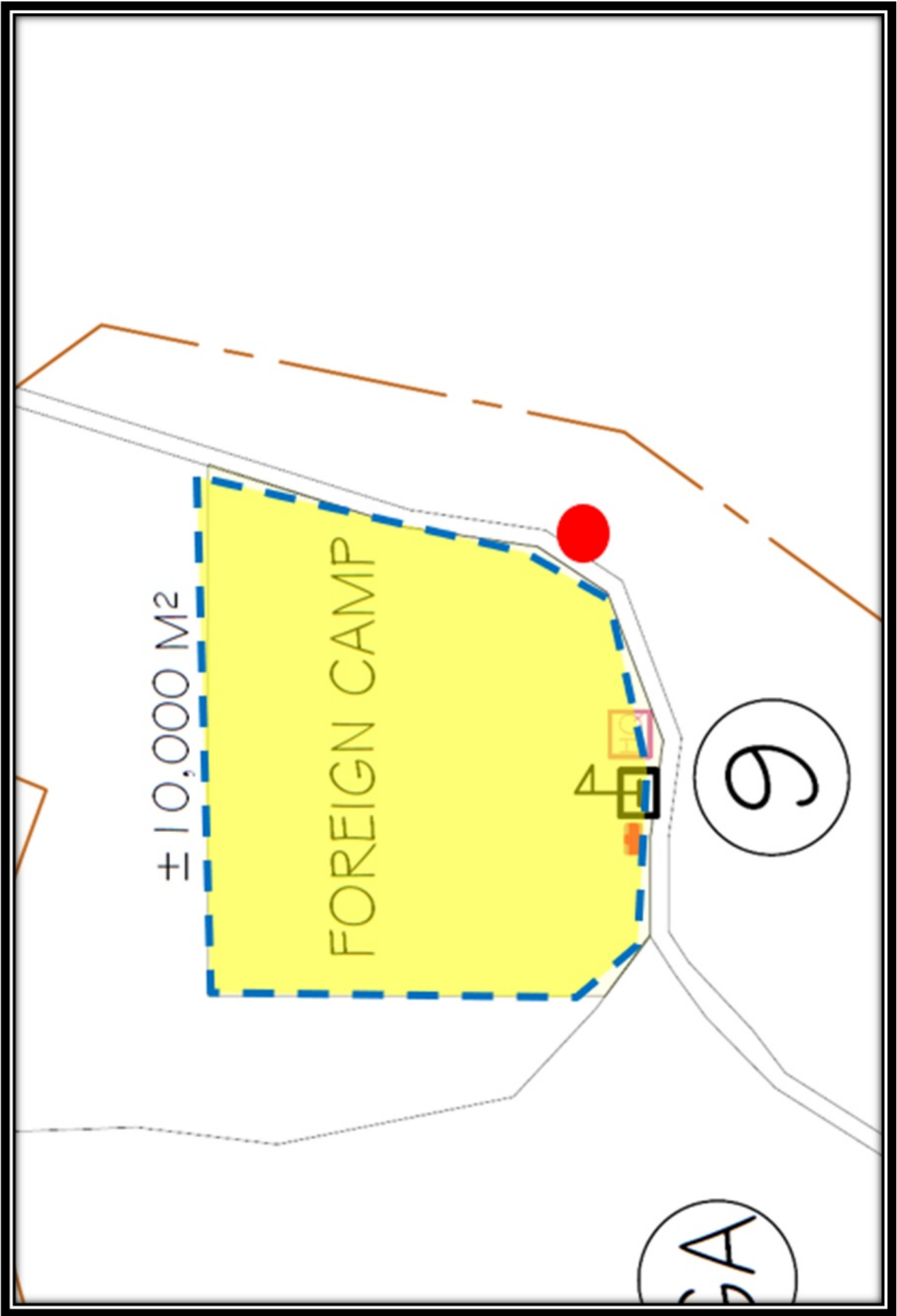
CAMP- WESTERN MINDANAO REGION (WMR)



CAMP- NATIONAL CAPITAL REGION (NCR)



CAMP- FOREIGN DELEGATES



LEGEND	
SYMBOL	DESCRIPTION
---	BOUNDARY LINE
---	CREEK
CR-1	CAMP ROAD
---	NATIONAL ROAD
CR-1	CAMP ROAD (CONCRETE ROAD)
---	CAMP ROAD (GRAVEL ROAD)
---	BRIDGE
---	SUB CAMP
---	GRAND ARENA
---	GOVT. BUILDING
---	JAMBO MARKET
---	TOILET
---	MAIN ENTRANCE
---	TOURISM CENTER
---	PASALLIBONG CENTER
---	JAMBO MARKET
---	SUB CAMP HEADQUARTERS
---	TRANSFORMER LOCATION
---	STREET LIGHTS
---	WATER PIPELINE
---	GATE VALVE

PROPOSED ASSIGNMENT OF SUB CAMP	AREA	CAMPABLE AREA
WESTERN VISAYAS REGION (11,170)	±227,179 SQ.M.	±113,052 SQ.M.
CENTRAL LUZON REGION (3400)	±50,616 SQ.M.	±24,129 SQ.M.
SOUTHERN TAGALOG REGION & BICOL REGION (5780)	±72,346 SQ.M.	±25,160 SQ.M.
EASTERN VISAYAS REGION (5780)	±59,472 M²	±35,442 M²
NORTHEASTERN LUZON REG. (2390)	±59,550 SQ.M.	±19,787 SQ.M.
EASTERN MINDANAO REGION (5780)	±65,000 SQ.M.	±39,993 SQ.M.
WESTERN MINDANAO REGION (5780)	±78,739 SQ.M.	±37,879 SQ.M.
NATIONAL CAPITAL REGION (5780)	±60,355 M²	±38,953 M²
FOREIGN CAMP	5,000 SQ.M.	5,000 SQ.M.
JAMBO MARKET	±67,491 SQ.M.	
CAMP PASSI	±84,126 SQ.M.	
GRAND ARENA	±91,990 SQ.M.	
NATL. SERV. TEAM / ADULT HUB (3250)	±19,037 SQ.M.	±7,326 SQ.M.
PARKING	±32,456 SQ.M.	999 PARKINGS

BRGY. BACURANAN GYM

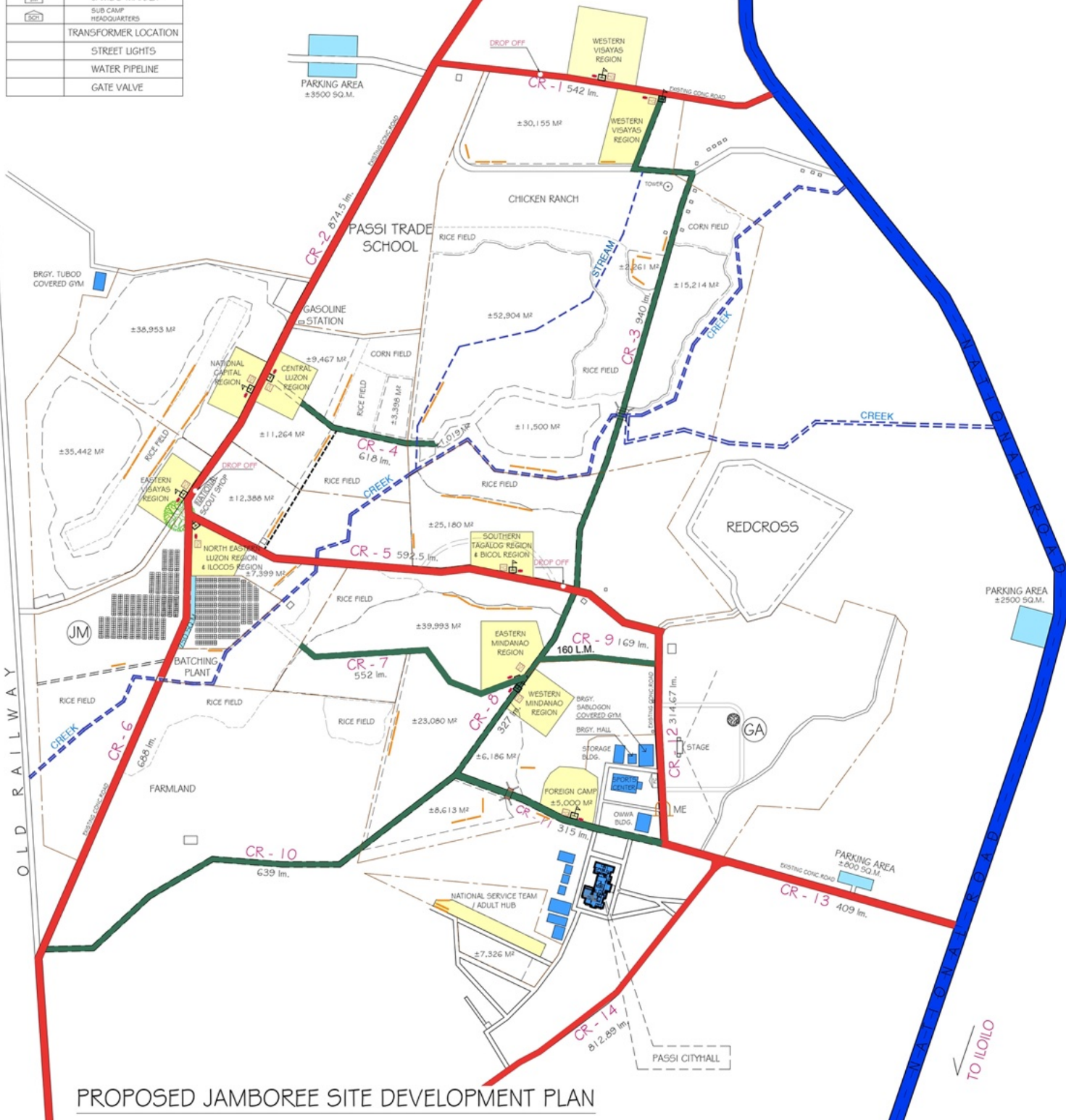
PARKING AREA ±10,000 SQ.M.

PARKING AREA ±10,000 SQ.M.

TO ROXAS

PASSI CITY COLLEGE

PARKING AREA ±1,000 SQ.M.



PROPOSED JAMBOREE SITE DEVELOPMENT PLAN

GREETINGS



PASSI CITY OFFICIALS

“Together, we will bring Passi City to its Greater Heights!”



DEPARTMENT OF EDUCATION - SCHOOLS DIVISION OF PASSI CITY

“One Empowered Team, One Passinhon Dream”

ACKNOWLEDGMENTS

The fruition of the Pintados de Passi Camp Handbook for the 18th National Scout Jamboree stands as a testament to the unwavering dedication and collaborative spirit of remarkable individuals.

With hearts united under the mantras of "One Empowered Team, One Passinhon Dream" and "Together, We Will Bring Passi City to Its Greater Heights!" the working committees labored tirelessly, pooling diverse talents, ideas, and passions to craft a comprehensive guide that embodies the essence of this extraordinary event.

We express our deepest gratitude to the Boy Scouts of the Philippines (BSP) Officials, City of Passi Officials and employees, DepEd Officials and employees, and various working committees, whose commitment, collaboration, and shared vision made this invaluable resource a reality. Your dedication echoes the very spirit of Scouting, inspiring unity and empowerment in every page and piece of advice offered in this handbook.

May this handbook stand as witness to the power of teamwork, the beauty of shared dreams, and the incredible strength found within a united and passionate team.




**- The Pintados de Passi Camp
Handbook Committee**



18TH NATIONAL SCOUT JAMBOREE

#ALL ROADS LEAD TO PASSI CITY

PASSI CITY LGU EMERGENCY HOTLINE

 City Disaster Risk Reduction Office (CDRRMO) / Passi City Responders in Disaster and Emergency (PRiDE) 📞 09814961800 📞 09665277810 📞 311-6399	 Bureau of Fire Protection 📞 09636226957 📞 09278171330 📞 311-5723	PASSI CITY COMMAND CENTER OPCEN CALLSIGN: PASSI CITY COM-CEN 📞 146.740 <small>MONITOR / TRANSMIT</small> 📞 150.740 <small>REPEATER</small>
 Philippine National Police 📞 09985986221 📞 311-5723	City Information Office 📞 311-5876	City Health Office 📞 311-5046
City Social Welfare & Development 📞 311-5043		

Don Valerio Palmares Sr. Memorial District Hospital
 📞 502-0537

Passi City Scout Support Hotline

09665328559 | 09058979515
 09855499202 | 09855499193

18th National Scout Jamboree
December 11-17, 2023
City of Passi, Iloilo, Philippines

All roads lead to Passi City!

